



ZANARDO

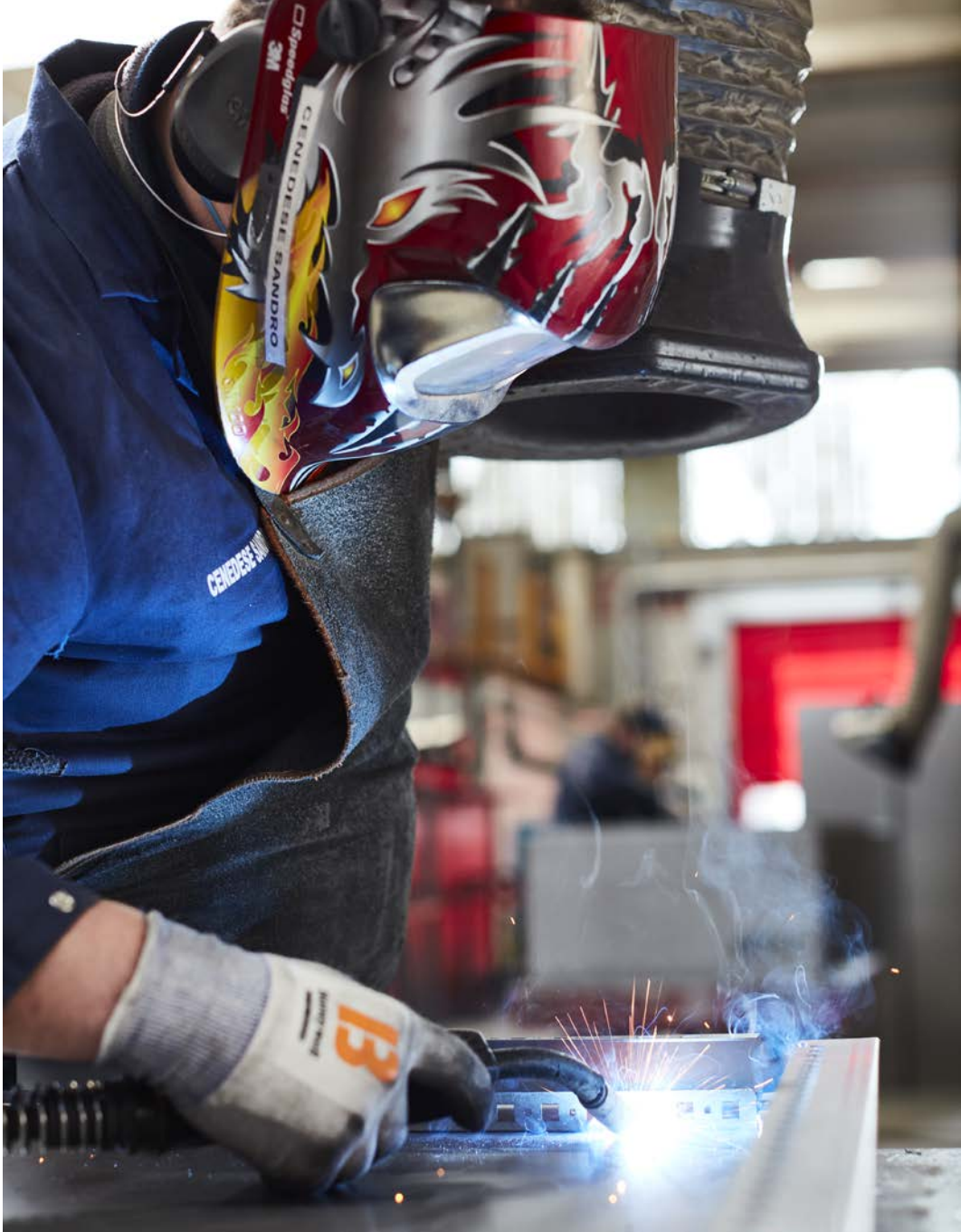
ZANARDO.

ENCLOSURE FOR ELECTRICAL EQUIPMENTS

BROCHURE

EN





KEEP ENERGY ALIVE





ENCLOSURE FOR ELECTRICAL EQUIPMENTS

KEEP ENERGY ALIVE



Zanardo S.p.A. is a leading company in producing metal carpentry for electrical systems and industrial automation.

Zanardo was founded in 1973 by Dino Zanardo and it is based in Susegana (Treviso).

As time went by the company grew, becoming bigger and bigger.

The firm now counts five separate production units, sales offices and a warehouse in Susegana, a separate branch in Rovigo, a subsidiary company in Holland, distributors in Australia, South Africa and U.S.A. nowadays.

Electrical systems, control machinery, computers, industrial automation: all you need is a strong chest keeping these fragile mechanisms safe.

Zanardo: a strong company, a professional team, a technical ability which can satisfy our customers' needs.





Quality meant as a meticulous care while producing our carpentry. Products must be made “as they have to be made” in order to reach the customer in perfect condition.



Resistance meant as product’s firmness and stability. Our products do not fear shocks and guarantee long duration.



Innovation meant as a continuous tension to improvement, new technologies research, investing in new infrastructures, new machinery and employees training.



Eco-friendship meant as love for the environment that we want to preserve by waste recycling, smart industrial waste disposal, investment in solar panels as a green energy source.







Transparency meant as clarity on product pricing, honesty and trustworthiness about missions and challenges we take on, concreteness about products quality and customer service.



Multi-ethnicity meant as cooperation of working force from many different countries. Our workers friendly share the everyday working reality and the passion for this job.



NEW PLANT FOR PAINTING

CATAPHORESIS

Zanardo S.p.A. is proud to announce the commissioning of its brand new powder-coating system, integrated with cataphoresis treatment to the world of electrical panels. This system is the largest and most modern currently available from any manufacturer of electrical panels.

This type of coating works by immersion and ensures the protective film penetrates into every narrow opening or hole in the product. We are the first in the electrical panel sector to use a Japanese epoxy cataphoretic product from the automotive sector which guarantees mechanical seal, elasticity and long life, and can be painted over.

The painting process is fully automatic and monitored by software on a 4.0 digital platform, integrated into the internal management system.





SYSTEM FEATURES

STEP 1 / LOADING THE MATERIAL

- 3 stations for material loading
- 3500 metres of track for loading the material
- 125 hangers
- 250 kg maximum weight permitted for each hanger
- 3.5 metres/minute working speed
- 8 metres/minute material movement spe

STEP 2 / TREATMENT

- 800 square metres of treatable surface/hour
- Treatment tunnel length 54 metres
- Drying oven at 110° for 15 min.
- 90 m³ double cataphoresis immersion tank.
- 4 pieces with maximum simultaneous coating dimensions H=2200 W=3500 D=1000
- Cataphoresis polymerisation oven at 165° for 18 minutes
- 2 automatic powder-coating cabins
- 1 manual powder-coating cabin
- Powder-coating polymerisation oven at 170° for 20 minutes
- 3 stations for material unloading

ADVANTAGES OF THE PROCESS

- Guaranteed protective film coverage
- Reduction in the applied coating thickness
- Double baking for products
- Production speed
- Guaranteed treatment for cleaning the sheet metal, with six pre-treatment stages and passivation using nanotechnology
- Less environmental pollution with a closed-circuit purification system, use of liquid cataphoresis paint with just 1,5% of solvent, and a sharp reduction in coating product waste
- Low baking temperatures of the 2 products
- Longer product lifespan

A TREATMENT WHICH ENSURES BETTER SEAL AND DURATION

This treatment is standard for our products DRC, KA, VFR, KQ, KM, all stands, all accessories in RAL 7035, and a limited series of ES and D93 cases, at no additional cost.

Cataphoresis, combined with special powder coatings, will be used (on request) to manufacture products installed outdoors or in aggressive environments, where a "C4" degree of durability is required.

With these treatments, the products will be 100% comparable to those in galvanised sheet metal.

Within a few months we will have finished developing a treatment cycle with classification "C5X", with a duration of 1200 hours in a room with salt mist.

KEEP ENTER

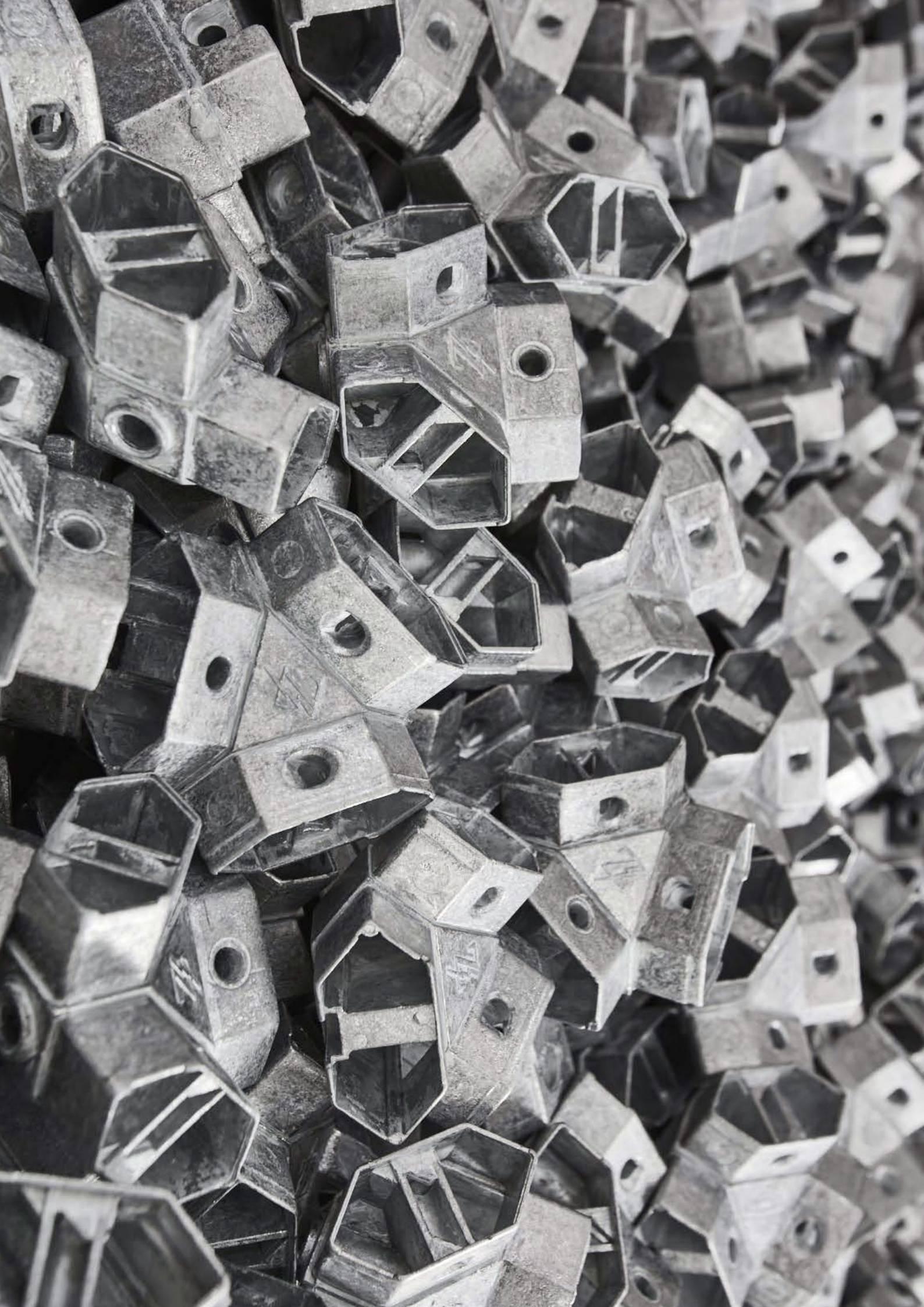




ENCLOSURE FOR ELECTRICAL EQUIPMENTS

READY ALIVE






BOXES	
D93	16
D01	18
ES	20
ES-PU	22
ES-PU forate	24
D93/GN-A	26
CABINETS	
DRC	28
DRC EARTHQUAKE	32
VFR	34
KA	36
KM , KQ	40
SUSPENSION SYSTEM	
HLT	42
D93-DPH , D93-DCF ,D93-DFF	43
DESK CABINETS	
DRC-LAN	44
LAN1 , LAN2	47
LVE	48
LV	50
LM	52
LVM	53
LC	54
LVD93	55
DISTRIBUTION SYSTEM	
DRC-RX , DRC-KX , VFR-KX	56
CMC	58
TCF	60
TCW	61
STAINLESS STEEL	
DRC-A , DRCP-A	62
VFR-A , VFRP-A	63
DRC-LAN-I , DRC-LAN1-I	64
LV-A , LVE-A , LM-A , LVD93-A	65
D93/SAM	66
ES-PU-A	68
D93-A , D93S-A , ES-A	69
VENTILATION SYSTEM	
WALL VENTILATION SYSTEM	70
ROOF VENTILATION SYSTEM	72

BOXES

D93

Modular boxes D93 redefining the whole idea of endurance, making them solid and flexible at the same time, and able to meet every need.

- Entirely manufactured in carbon steel sheet.
- Solid or transparent door.
- Smart cable-entry flange on the bottom.

 **NOTE:** Enclosures for indoor use only, please get in contact with our technical department for outdoor use.



Degree of Protection and Approvals:
 IP66 CEI EN 62 208 / CEI EN 60529 internal use
 IK10 CEI EN 62 208 / CEI EN 62262

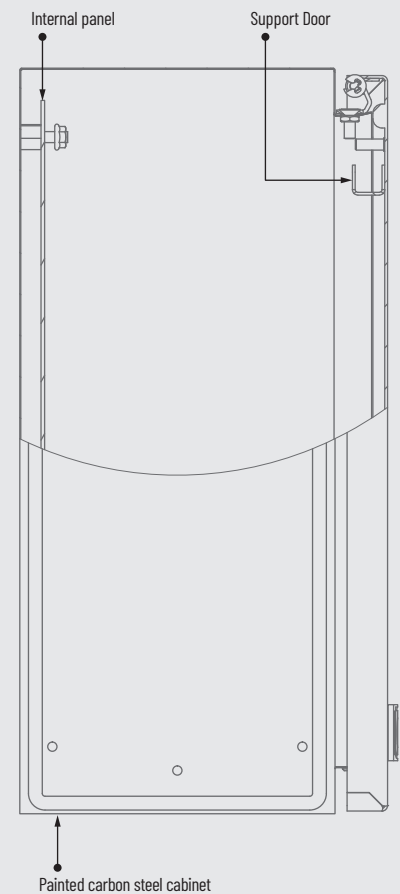


* Does not apply for transparent door.

Painting:
 Thermosetting powders

Standard colours:
 RAL 7035 textured

Material:
 1,5 mm thick carbon steel sheet



SERVICES ON REQUEST

All modifications made on request may affect existing standard certificates and declarations of conformity.

All customisation requests must be specified and detailed in full at the time of ordering, and cannot be changed after the order has been confirmed.

Technical data subject to change without notice.

 Pre-assembly accessories

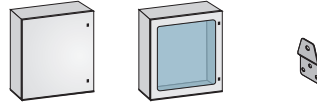
 Painting

 Drilling

 Customization

BOXES

D93



* = no cable flange.

Dimension (mm)			Doors number	Code D93 solid door internal plate flange	Code D93S transparent door, internal plate, flange	Wall fixing brackets set FeZn 2mm
H	W	D				
306	206	150	1	D93/1 *	-	AG1
306	256	150	1	D93/2	-	AG1
306	306	150	1	D93/4	-	AG1
356	256	150	1	D93/5	-	AG1
406	306	150	1	D93/7	-	AG1
506	306	150	1	D93/10	-	AG1
506	356	150	1	D93/12	-	AG1
306	256	200	1	D93/3	-	AG1
356	256	200	1	D93/6	-	AG1
406	306	200	1	D93/8	D93/8S	AG1
406	406	200	1	D93/9	D93/9S	AG1
506	306	200	1	D93/11	D93/11S	AG1
506	356	200	1	D93/13	D93/13S	AG1
506	406	200	1	D93/14	D93/14S	AG1
506	506	200	1	D93/16	D93/16S	AG1
600	800	200	2	D93/862	-	AG1
600	1000	200	2	D93/1062	-	AG1
606	406	200	1	D93/17	D93/17S	AG1
606	606	200	1	D93/19	D93/19S	AG1
706	506	200	1	D93/21	D93/21S	AG1
800	1000	200	2	D93/1082	-	AG1
806	506	200	1	D93/23	D93/23S	AG1
806	606	200	1	D93/25	D93/25S	AG1
806	806	200	1	D93/882	-	AG1
906	606	200	1	D93/28	D93/28S	AG1
1006	806	200	1	D93/33	D93/33S	AG1
506	406	250	1	D93/15	D93/15S	AG1
606	406	250	1	D93/18	D93/18S	AG1
606	606	250	1	D93/20	D93/20S	AG1
706	506	250	1	D93/22	D93/22S	AG1
806	506	250	1	D93/24	D93/24S	AG1
806	606	250	1	D93/26	D93/26S	AG1
906	606	250	1	D93/29	D93/29S	AG1
1006	606	250	1	D93/31	D93/31S	AG1
1006	806	250	1	D93/34	D93/34S	AG1
1206	806	250	1	D93/37	D93/37S	AG1
600	800	300	2	D93/863	-	AG1
600	1000	300	2	D93/1063	-	AG1
600	1200	300	2	D93/1263	-	AG1
600	1400	300	2	D93/1463	-	AG1
800	1000	300	2	D93/1083	-	AG1
800	1200	300	2	D93/1283	-	AG1
800	1400	300	2	D93/1483	-	AG1
806	606	300	1	D93/27	D93/27S	AG1
806	806	300	1	D93/883	-	AG1
906	606	300	1	D93/30	D93/30S	AG1
1000	1000	300	2	D93/10103	-	AG1
1006	606	300	1	D93/32	D93/32S	AG1
1006	806	300	1	D93/35	D93/35S	AG1
1000	1200	300	2	D93/12103	-	AG1
1200	1200	300	2	D93/12123	-	AG1
1206	606	300	1	D93/36	D93/36S	AG1
1206	806	300	1	D93/38	D93/38S	AG1
1200	1000	300	1	D93/39	-	AG1
1200	1000	300	2	D93/40	-	AG1

NOTE: Add the suffix **.35** to the order code for texture RAL 7035 paint.

BOXES

D01

Complete reliability and functionality are perfectly combined in "Made in Italy" Zanardo's D01 boxes.

The monobloc structure is welded in extremely resistance materials, that guarantees endurance and high performances in any conditions.

A real essential product of the range, that meets any production need.

 **NOTE:** Enclosures for indoor use only, please get in contact with our technical department for outdoor use.



Degree of Protection and Approvals:
IP66 CEI EN 62 208 / CEI EN 60529 internal use
IK10 CEI EN 62 208 / CEI EN 62262



Painting:

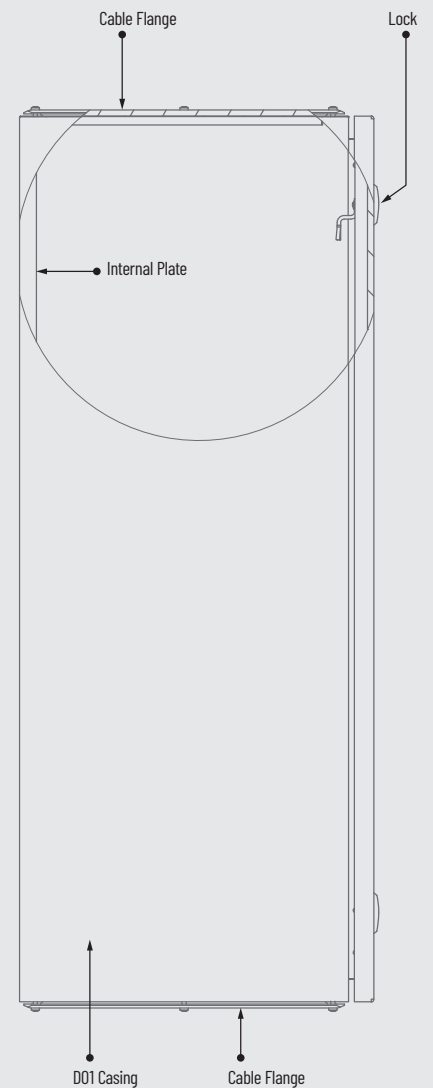
Thermosetting powders

Standard colours:

RAL 7035 textured

Material:

1,5 mm thick carbon steel sheet



SERVICES ON REQUEST

All modifications made on request may affect existing standard certificates and declarations of conformity.

All customisation requests must be specified and detailed in full at the time of ordering, and cannot be changed after the order has been confirmed.

Technical data subject to change without notice.



BOXES

D01



Dimension (mm)			Code D01 solid door, internal plate, top/bottom flange	Doors number	Internal Plate dimensions H x W	Wall fixing brackets set FeZn 2mm
H	W	D				
614	400	400	D01/4604	1	545x345	AG1
614	600	400	D01/6604	1	545x545	AG1
714	500	400	D01/5704	1	645x445	AG1
814	600	400	D01/6804	1	745x545	AG1
1014	600	400	D01/6104	1	945x545	AG1
1014	800	400	D01/8104	1	945x745	AG1
1214	600	400	D01/6124	1	1145x545	AG1
1214	800	400	D01/8124	1	1145x745	AG1
1414	600	400	D01/6144	1	1345x545	AG1
1414	800	400	D01/8144	1	1345x745	AG1

NOTE: Add the suffix **.35** to the order code for texture RAL 7035 paint.

Technical data subject to change without notice.

 **ZANARDO**



Overheating problem?

Wall ventilators

Filters and ventilators for air exchange on electricals cabinets.

Quick installation.

see more on pag. 70

BOXES ES

ES boxes are designed to provide your electrical systems with the best protection possible avoiding the risk of losses.

- Special solid-cover structure.
- Polyurethane sealing gasket.

NOTE: Enclosures for indoor use only, please get in contact with our technical department for outdoor use.



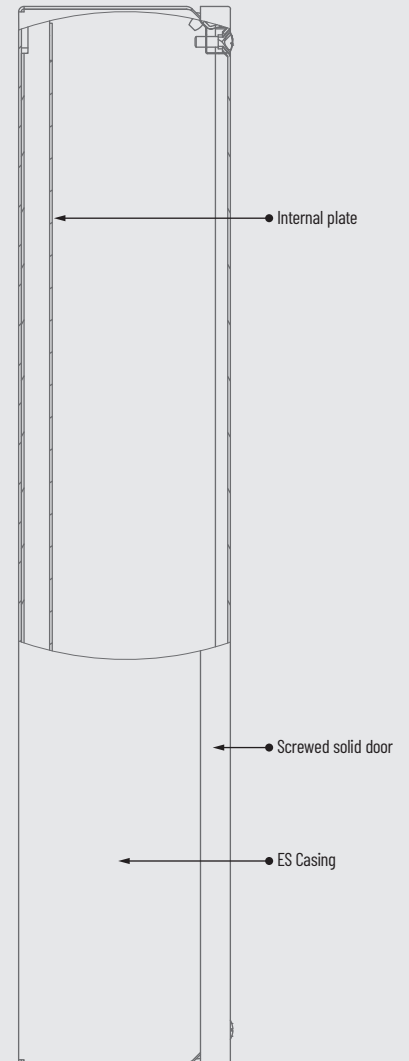
Degree of Protection and Approvals:
IP66 CEI EN 62 208 / CEI EN 60529 internal use
IK10 CEI EN 62 208 / CEI EN 62262



Painting:
Thermosetting powders

Standard colours:
RAL 7035 textured

Material:
1,5 mm thick carbon steel sheet



SERVICES ON REQUEST

All modifications made on request may affect existing standard certificates and declarations of conformity.

All customisation requests must be specified and detailed in full at the time of ordering, and cannot be changed after the order has been confirmed.

Technical data subject to change without notice.

Pre-assembly accessories

Painting

Drilling

Customization

BOXES

ES-PU JUNCTION BOXES WITH SOLID COVER

ES-PU: Special safety gasket.

A real "solidity miracle" that completely avoids any risk of loss.

 **NOTE:** Enclosures for indoor use only, please get in contact with our technical department for outdoor use.



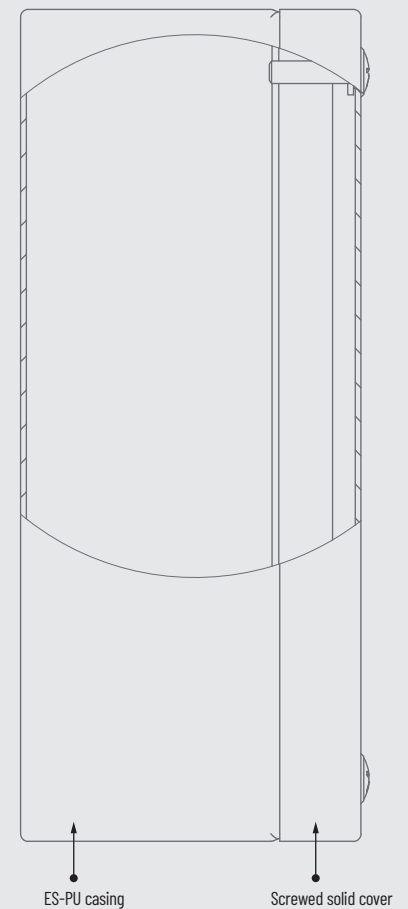
Degree of Protection and Approvals:
IP66 CEI EN 62 208 / CEI EN 60529 internal use
IK10 CEI EN 62 208 / CEI EN 62262



Painting:
Thermosetting powders

Standard colours:
RAL 7035 textured

Material:
1,5 mm thick carbon steel sheet.
1,5 mm thick AISI 304/316 stainless-steel fine
scotch brite medium satin.



SERVICES ON REQUEST

All modifications made on request may affect existing standard certificates and declarations of conformity.

All customisation requests must be specified and detailed in full at the time of ordering, and cannot be changed after the order has been confirmed.

Technical data subject to change without notice.


Pre-assembly
accessories


Painting


Drilling

BOXES

ES-PU JUNCTION BOXES WITH DRILLED COVER

The unique performances of ES, recur in the ES-PU boxes and push-button panels. Built with "Made in Italy" high quality materials and techniques, they are characterised by an extraordinary sealing capacity.

- Screwed-in drilling cover.
- Polyurethane gaskets.

NOTE: Enclosures for indoor use only, please get in contact with our technical department for outdoor use.

NOTE: Our products are TÜV certified with protection degree IP66 and IK10 and UL-CSA with Types between 1 and 4X complying with UL508A standards for structure without any machining.
To keep these certifications valid, after the required drilling, equipment of Type and certificates equal to or greater than the product itself must be included.



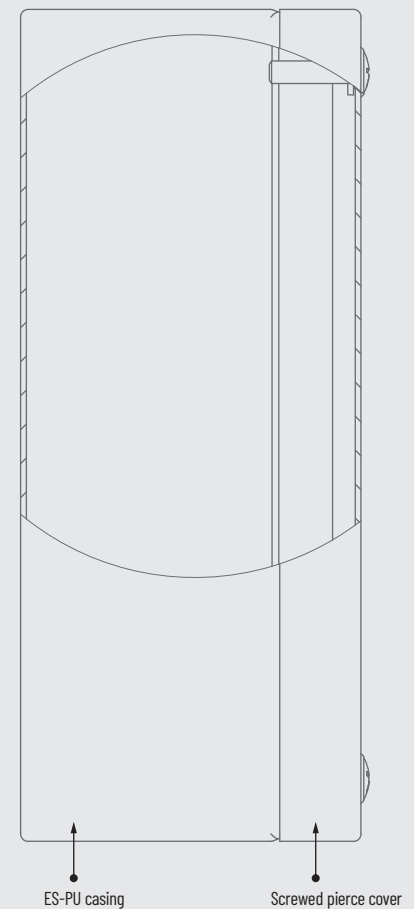
Degree of Protection and Approvals:
IP66 CEI EN 62 208 / CEI EN 60529 internal use
IK10 CEI EN 62 208 / CEI EN 62262



Painting:
Thermosetting powders

Standard colours:
RAL 7035 textured

Material:
1,5 mm thick carbon steel sheet.
1,5 mm thick AISI 304/316 stainless-steel fine scotch brite medium satin.



SERVICES ON REQUEST

All modifications made on request may affect existing standard certificates and declarations of conformity.

All customisation requests must be specified and detailed in full at the time of ordering, and cannot be changed after the order has been confirmed.

Technical data subject to change without notice.

Pre-assembly
accessories

Painting

Drilling

BOXES

D93/GN-A

Solid door hanging boxes. This boxes comply with HACCP CE852/2004 regulations regarding critical conditions of food production and pharmaceutical-production fields.

- 30° tilt roof.
- Hygiene and cleanability.
- Completely closed case
- High level of protection.

 **NOTE:** Enclosures for indoor use only, please get in contact with our technical department for outdoor use.



THE UL/CSA MARK MUST BE SPECIFICALLY REQUESTED IN THE ORDER.



SERVICES ON REQUEST

All modifications made on request may affect existing standard certificates and declarations of conformity.

All customisation requests must be specified and detailed in full at the time of ordering, and cannot be changed after the order has been confirmed.

Degree of Protection and Approvals:

IP66 CEI EN 62 208 / CEI EN 60529 internal use
IK10 CEI EN 62 208 / CEI EN 62262



Finish:

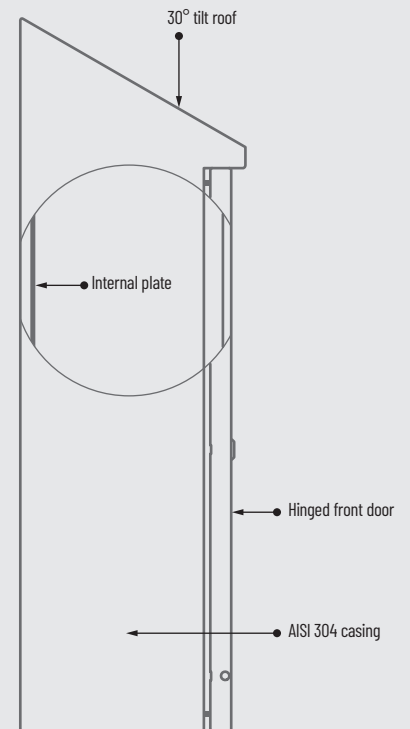
Fine scotch brite medium satin, 240 grit.

Solid door:

1,5 mm thick;
polyurethane sealing gasket;
chrome zamak locking system with 3 mm double comb tool insert;
other configurations are available.
120° standard opening with reversible left hinges.

Material:

1,5 mm thick AISI 304 stainless-steel.
In AISI 316 stainless-steel on request.



Technical data subject to change without notice.

 Pre-assembly accessories

 Painting

 Drilling

CABINETS

DRC

System of cabinets suitable to be joined together to built up multiple suites.

- Strong full welded frame structure.
- Bottom with cable inlet plate, top, side and rear walls are screwed to the basic frame.
- Available with solid door and window door, equipped with/without internal door.
- Depth-adjustable Mpl in galvanized steel 2,5 mm.
- Arrange for plinth mounting.

 **NOTE:** Enclosures for indoor use only, please get in contact with our technical department for outdoor use.



Degree of Protection and Approvals:
 IP66 CEI EN 62 208 / CEI EN 60529 internal use
 IK10 CEI EN 62 208 / CEI EN 62262



* Does not apply for transparent door.

Painting:

Thermosetting powders

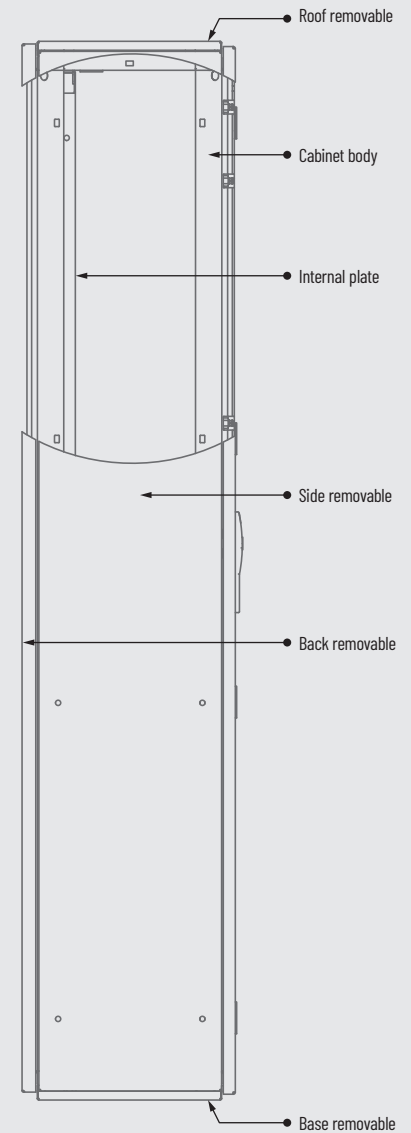
Standard colours:

RAL 7035 textured

Plinth: RAL 7009 textured

Material:

1,5/1,8 mm thick carbon steel sheet



SERVICES ON REQUEST

All modifications made on request may affect existing standard certificates and declarations of conformity.

All customisation requests must be specified and detailed in full at the time of ordering, and cannot be changed after the order has been confirmed.

Technical data subject to change without notice.

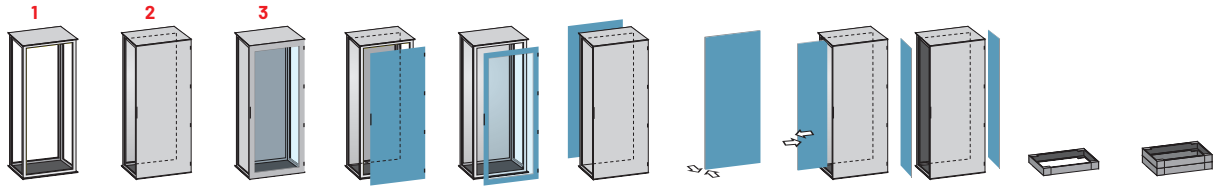


CABINETS

DRC

1 By separated ordering:
plinth, door, internal plate,
back and sides panels.

2-3 By separated ordering:
plinth and side panels
(internal plate is included)



Dimension (mm)			DRC SS structure with fixed base and roof	DRC solid door, internal plate and back panel	DRCP glass door, internal plate and back panel	Door solid	Door transparent	Back Panel	Front installation internal plate	Side installation internal plate	Side panels pair	Plinth H 100	Plinth H 200	
H	W	D												
1410	600	400	DRC165SS	DRC165	DRC165P	VFR801	VFR801P	VFR811	VFR101	DRC235	DRC189	DRC601	DRC621	
		500	DRC168SS	DRC168	DRC168P	VFR801	VFR801P	VFR811	VFR101	DRC235	DRC190	DRC602	DRC622	
		600	DRC171SS	DRC171	DRC171P	VFR801	VFR801P	VFR811	VFR101	DRC235	DRC191	DRC603	DRC623	
	800	400	DRC166SS	DRC166	DRC166P	VFR802	VFR802P	VFR812	VFR102	DRC236	DRC189	DRC606	DRC626	
		500	DRC169SS	DRC169	DRC169P	VFR802	VFR802P	VFR812	VFR102	DRC236	DRC190	DRC607	DRC627	
		600	DRC172SS	DRC172	DRC172P	VFR802	VFR802P	VFR812	VFR102	DRC236	DRC191	DRC608	DRC628	
	1200	400	DRC167SS	DRC167	DRC167P	VFR806	VFR806P	VFR816	VFR106	DRC237	DRC189	DRC616	DRC636	
		500	DRC170SS	DRC170	DRC170P	VFR806	VFR806P	VFR816	VFR106	DRC237	DRC190	DRC617	DRC637	
		600	DRC173SS	DRC173	DRC173P	VFR806	VFR806P	VFR816	VFR106	DRC237	DRC191	DRC618	DRC638	
	1610	400	400	DRC174SS	DRC174	-	VFR808	-	VFR818	VFR108	DRC249	DRC192	DRC557	DRC562
			500	DRC179SS	DRC179	-	VFR808	-	VFR818	VFR108	DRC249	DRC193	DRC558	DRC563
			600	DRC184SS	DRC184	-	VFR808	-	VFR818	VFR108	DRC249	DRC194	DRC559	DRC564
600		400	DRC175SS	DRC175	DRC175P	VFR803	VFR803P	VFR813	VFR103	DRC238	DRC192	DRC601	DRC621	
		500	DRC180SS	DRC180	DRC180P	VFR803	VFR803P	VFR813	VFR103	DRC238	DRC193	DRC602	DRC622	
		600	DRC185SS	DRC185	DRC185P	VFR803	VFR803P	VFR813	VFR103	DRC238	DRC194	DRC603	DRC623	
800		400	DRC176SS	DRC176	DRC176P	VFR804	VFR804P	VFR814	VFR104	DRC239	DRC192	DRC606	DRC626	
		500	DRC181SS	DRC181	DRC181P	VFR804	VFR804P	VFR814	VFR104	DRC239	DRC193	DRC607	DRC627	
		600	DRC186SS	DRC186	DRC186P	VFR804	VFR804P	VFR814	VFR104	DRC239	DRC194	DRC608	DRC628	
1000		400	DRC177SS	DRC177	DRC177P	VFR805	VFR805P	VFR815	VFR105	DRC240	DRC192	DRC611	DRC631	
		500	DRC182SS	DRC182	DRC182P	VFR805	VFR805P	VFR815	VFR105	DRC240	DRC193	DRC612	DRC632	
		600	DRC187SS	DRC187	DRC187P	VFR805	VFR805P	VFR815	VFR105	DRC240	DRC194	DRC613	DRC633	
1200		400	DRC178SS	DRC178	DRC178P	VFR807	VFR807P	VFR817	VFR107	DRC241	DRC192	DRC616	DRC636	
		500	DRC183SS	DRC183	DRC183P	VFR807	VFR807P	VFR817	VFR107	DRC241	DRC193	DRC617	DRC637	
		600	DRC188SS	DRC188	DRC188P	VFR807	VFR807P	VFR817	VFR107	DRC241	DRC194	DRC618	DRC638	
1810		200	400	DRC1824SS	DRC1824	-	DRC788	-	DRC792	-	-	DRC351	DRC531	DRC541
			500	DRC1825SS	DRC1825	-	DRC788	-	DRC792	-	-	DRC352	DRC532	DRC542
			600	DRC1826SS	DRC1826	-	DRC788	-	DRC792	-	-	DRC353	DRC533	DRC543
	800		DRC1828SS	DRC1828	-	DRC788	-	DRC792	-	-	DRC354	DRC534	DRC544	
	400	1000	DRC1821SS	DRC1821	-	DRC788	-	DRC792	-	-	DRC355	DRC535	DRC545	
		400	DRC150SS	DRC150	-	DRC798	-	DRC793	DRC100	DRC243	DRC351	DRC557	DRC562	
		500	DRC151SS	DRC151	-	DRC798	-	DRC793	DRC100	DRC243	DRC352	DRC558	DRC563	
		600	DRC152SS	DRC152	-	DRC798	-	DRC793	DRC100	DRC243	DRC353	DRC559	DRC564	
		800	DRC153SS	DRC153	-	DRC798	-	DRC793	DRC100	DRC243	DRC354	DRC560	DRC565	
		1000	DRC154SS	DRC154	-	DRC798	-	DRC793	DRC100	DRC243	DRC355	DRC561	DRC566	
		400	DRC155	DRC1	DRC1P	DRC801	DRC801P	DRC811	DRC101	DRC217	DRC351	DRC601	DRC621	
		500	DRC255	DRC2	DRC2P	DRC801	DRC801P	DRC811	DRC101	DRC217	DRC352	DRC602	DRC622	
		600	DRC355	DRC3	DRC3P	DRC801	DRC801P	DRC811	DRC101	DRC217	DRC353	DRC603	DRC623	
		800	DRC455	DRC4	DRC4P	DRC801	DRC801P	DRC811	DRC101	DRC217	DRC354	DRC604	DRC624	
	800	1000	DRC555	DRC5	DRC5P	DRC801	DRC801P	DRC811	DRC101	DRC217	DRC355	DRC605	DRC625	
		400	DRC655	DRC6	DRC6P	DRC802	DRC802P	DRC812	DRC102	DRC218	DRC351	DRC606	DRC626	
		500	DRC755	DRC7	DRC7P	DRC802	DRC802P	DRC812	DRC102	DRC218	DRC352	DRC607	DRC627	
		600	DRC855	DRC8	DRC8P	DRC802	DRC802P	DRC812	DRC102	DRC218	DRC353	DRC608	DRC628	
		800	DRC955	DRC9	DRC9P	DRC802	DRC802P	DRC812	DRC102	DRC218	DRC354	DRC609	DRC629	
		1000	DRC1055	DRC10	DRC10P	DRC802	DRC802P	DRC812	DRC102	DRC218	DRC355	DRC610	DRC630	
	1000	400	DRC1155	DRC11	DRC11P	DRC803	DRC803P	DRC813	DRC103	DRC219	DRC351	DRC611	DRC631	
		500	DRC1255	DRC12	DRC12P	DRC803	DRC803P	DRC813	DRC103	DRC219	DRC352	DRC612	DRC632	
		600	DRC1355	DRC13	DRC13P	DRC803	DRC803P	DRC813	DRC103	DRC219	DRC353	DRC613	DRC633	
		800	DRC1455	DRC14	DRC14P	DRC803	DRC803P	DRC813	DRC103	DRC219	DRC354	DRC614	DRC634	
	1200	1000	DRC1555	DRC15	DRC15P	DRC803	DRC803P	DRC813	DRC103	DRC219	DRC355	DRC615	DRC635	
		400	DRC1655	DRC16	DRC16P	DRC804	DRC804P	DRC814	DRC104	DRC220	DRC351	DRC616	DRC636	
		500	DRC1755	DRC17	DRC17P	DRC804	DRC804P	DRC814	DRC104	DRC220	DRC352	DRC617	DRC637	
		600	DRC1855	DRC18	DRC18P	DRC804	DRC804P	DRC814	DRC104	DRC220	DRC353	DRC618	DRC638	
		800	DRC1955	DRC19	DRC19P	DRC804	DRC804P	DRC814	DRC104	DRC220	DRC354	DRC619	DRC639	
		1000	DRC2055	DRC20	DRC20P	DRC804	DRC804P	DRC814	DRC104	DRC220	DRC355	DRC620	DRC640	

Continues overleaf.

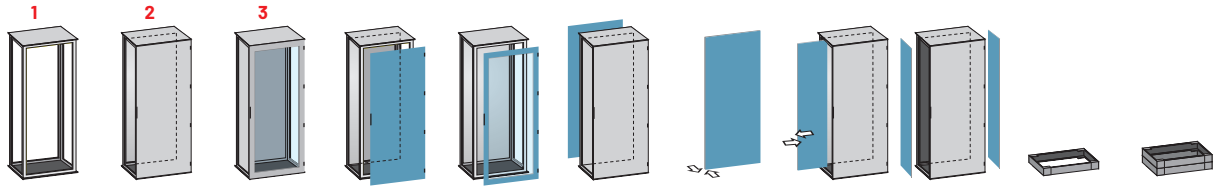
NOTE: Add the suffix **.35** to the order code for texture RAL 7035 paint.

CABINETS

DRC

1 By separated ordering:
plinth, door, internal plate,
back and sides panels.

2-3 By separated ordering:
plinth and side panels
(internal plate is included)



Dimension (mm)			DRC SS structure with fixed base and roof	DRC solid door, internal plate and back panel	DRCP glass door, internal plate and back panel	Door solid	Door transparent	Back Panel	Front installation internal plate	Side installation internal plate	Side panels pair	Plinth H 100	Plinth H 200
H	W	D											
1810	1400	400	DRC41SS	DRC41	DRC41P	DRC809	DRC809P	DRC819	DRC109	DRC221	DRC351	DRC641	DRC651
		500	DRC42SS	DRC42	DRC42P	DRC809	DRC809P	DRC819	DRC109	DRC221	DRC352	DRC642	DRC652
		600	DRC43SS	DRC43	DRC43P	DRC809	DRC809P	DRC819	DRC109	DRC221	DRC353	DRC643	DRC653
		800	DRC44SS	DRC44	DRC44P	DRC809	DRC809P	DRC819	DRC109	DRC221	DRC354	DRC644	DRC654
		1000	DRC45SS	DRC45	DRC45P	DRC809	DRC809P	DRC819	DRC109	DRC221	DRC355	DRC645	DRC655
	1600	400	DRC46SS	DRC46	DRC46P	DRC810	DRC810P	DRC820	DRC110	DRC222	DRC351	DRC646	DRC656
		500	DRC47SS	DRC47	DRC47P	DRC810	DRC810P	DRC820	DRC110	DRC222	DRC352	DRC647	DRC657
		600	DRC48SS	DRC48	DRC48P	DRC810	DRC810P	DRC820	DRC110	DRC222	DRC353	DRC648	DRC658
		800	DRC49SS	DRC49	DRC49P	DRC810	DRC810P	DRC820	DRC110	DRC222	DRC354	DRC649	DRC659
		1000	DRC50SS	DRC50	DRC50P	DRC810	DRC810P	DRC820	DRC110	DRC222	DRC355	DRC650	DRC660
2010	200	400	DRC2024SS	DRC2024	-	DRC789	-	DRC794	-	-	DRC356	DRC531	DRC541
		500	DRC2025SS	DRC2025	-	DRC789	-	DRC794	-	-	DRC357	DRC532	DRC542
		600	DRC2026SS	DRC2026	-	DRC789	-	DRC794	-	-	DRC358	DRC533	DRC543
		800	DRC2028SS	DRC2028	-	DRC789	-	DRC794	-	-	DRC359	DRC534	DRC544
		1000	DRC2021SS	DRC2021	-	DRC789	-	DRC794	-	-	DRC360	DRC535	DRC545
	400	400	DRC155SS	DRC155	-	DRC799	-	DRC795	DRC119	DRC242	DRC356	DRC557	DRC562
		500	DRC156SS	DRC156	-	DRC799	-	DRC795	DRC119	DRC242	DRC357	DRC558	DRC563
		600	DRC157SS	DRC157	-	DRC799	-	DRC795	DRC119	DRC242	DRC358	DRC559	DRC564
		800	DRC158SS	DRC158	-	DRC799	-	DRC795	DRC119	DRC242	DRC359	DRC560	DRC565
		1000	DRC159SS	DRC159	-	DRC799	-	DRC795	DRC119	DRC242	DRC360	DRC561	DRC566
	600	400	DRC215S	DRC21	DRC21P	DRC805	DRC805P	DRC815	DRC105	DRC223	DRC356	DRC601	DRC621
		500	DRC225S	DRC22	DRC22P	DRC805	DRC805P	DRC815	DRC105	DRC223	DRC357	DRC602	DRC622
		600	DRC235S	DRC23	DRC23P	DRC805	DRC805P	DRC815	DRC105	DRC223	DRC358	DRC603	DRC623
		800	DRC245S	DRC24	DRC24P	DRC805	DRC805P	DRC815	DRC105	DRC223	DRC359	DRC604	DRC624
		1000	DRC255S	DRC25	DRC25P	DRC805	DRC805P	DRC815	DRC105	DRC223	DRC360	DRC605	DRC625
	800	400	DRC265S	DRC26	DRC26P	DRC806	DRC806P	DRC816	DRC106	DRC224	DRC356	DRC606	DRC626
		500	DRC275S	DRC27	DRC27P	DRC806	DRC806P	DRC816	DRC106	DRC224	DRC357	DRC607	DRC627
		600	DRC285S	DRC28	DRC28P	DRC806	DRC806P	DRC816	DRC106	DRC224	DRC358	DRC608	DRC628
		800	DRC295S	DRC29	DRC29P	DRC806	DRC806P	DRC816	DRC106	DRC224	DRC359	DRC609	DRC629
		1000	DRC305S	DRC30	DRC30P	DRC806	DRC806P	DRC816	DRC106	DRC224	DRC360	DRC610	DRC630
	1000	400	DRC315S	DRC31	DRC31P	DRC807	DRC807P	DRC817	DRC107	DRC225	DRC356	DRC611	DRC631
		500	DRC325S	DRC32	DRC32P	DRC807	DRC807P	DRC817	DRC107	DRC225	DRC357	DRC612	DRC632
		600	DRC335S	DRC33	DRC33P	DRC807	DRC807P	DRC817	DRC107	DRC225	DRC358	DRC613	DRC633
		800	DRC345S	DRC34	DRC34P	DRC807	DRC807P	DRC817	DRC107	DRC225	DRC359	DRC614	DRC634
		1000	DRC355S	DRC35	DRC35P	DRC807	DRC807P	DRC817	DRC107	DRC225	DRC360	DRC615	DRC635
	1200	400	DRC365S	DRC36	DRC36P	DRC808	DRC808P	DRC818	DRC108	DRC226	DRC356	DRC616	DRC636
		500	DRC375S	DRC37	DRC37P	DRC808	DRC808P	DRC818	DRC108	DRC226	DRC357	DRC617	DRC637
		600	DRC385S	DRC38	DRC38P	DRC808	DRC808P	DRC818	DRC108	DRC226	DRC358	DRC618	DRC638
		800	DRC395S	DRC39	DRC39P	DRC808	DRC808P	DRC818	DRC108	DRC226	DRC359	DRC619	DRC639
		1000	DRC405S	DRC40	DRC40P	DRC808	DRC808P	DRC818	DRC108	DRC226	DRC360	DRC620	DRC640
	1400	400	DRC515S	DRC51	DRC51P	DRC809/2	DRC809/2P	DRC821	DRC111	DRC227	DRC356	DRC641	DRC651
		500	DRC525S	DRC52	DRC52P	DRC809/2	DRC809/2P	DRC821	DRC111	DRC227	DRC357	DRC642	DRC652
		600	DRC535S	DRC53	DRC53P	DRC809/2	DRC809/2P	DRC821	DRC111	DRC227	DRC358	DRC643	DRC653
		800	DRC545S	DRC54	DRC54P	DRC809/2	DRC809/2P	DRC821	DRC111	DRC227	DRC359	DRC644	DRC654
		1000	DRC555S	DRC55	DRC55P	DRC809/2	DRC809/2P	DRC821	DRC111	DRC227	DRC360	DRC645	DRC655
	1600	400	DRC565S	DRC56	DRC56P	DRC810/2	DRC810/2P	DRC822	DRC112	DRC228	DRC356	DRC646	DRC656
		500	DRC575S	DRC57	DRC57P	DRC810/2	DRC810/2P	DRC822	DRC112	DRC228	DRC357	DRC647	DRC657
		600	DRC585S	DRC58	DRC58P	DRC810/2	DRC810/2P	DRC822	DRC112	DRC228	DRC358	DRC648	DRC658
		800	DRC595S	DRC59	DRC59P	DRC810/2	DRC810/2P	DRC822	DRC112	DRC228	DRC359	DRC649	DRC659
		1000	DRC605S	DRC60	DRC60P	DRC810/2	DRC810/2P	DRC822	DRC112	DRC228	DRC360	DRC650	DRC660

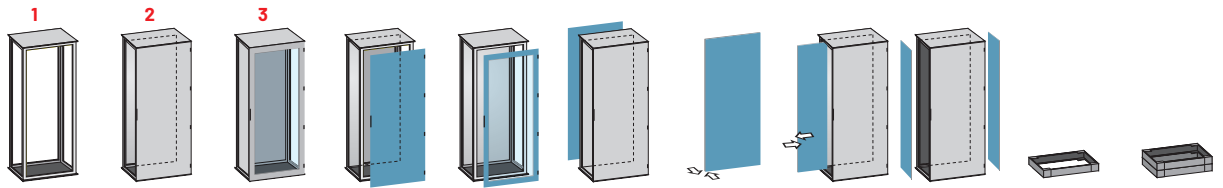
NOTE: Add the suffix **.35** to the order code for texture RAL 7035 paint.

CABINETS

DRC

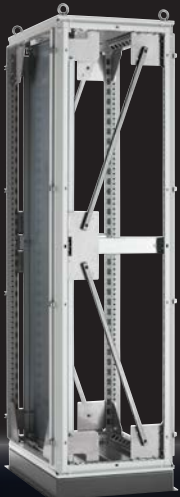
1 By separated ordering:
plinth, door, internal plate,
back and sides panels.

2-3 By separated ordering:
plinth and side panels
(internal plate is included)



Dimension (mm)			DRC SS structure with fixed base and roof	DRC solid door, internal plate and back panel	DRCP glass door, internal plate and back panel	Door solid	Door transparent	Back Panel	Front installation internal plate	Side installation internal plate	Side panels pair	Plinth H 100	Plinth H 200
H	W	D											
2210	200	400	DRC2224SS	DRC2224	-	DRC790	-	DRC796	-	-	DRC361	DRC531	DRC541
		500	DRC2225SS	DRC2225	-	DRC790	-	DRC796	-	-	DRC362	DRC532	DRC542
		600	DRC2226SS	DRC2226	-	DRC790	-	DRC796	-	-	DRC363	DRC533	DRC543
		800	DRC2228SS	DRC2228	-	DRC790	-	DRC796	-	-	DRC364	DRC534	DRC544
		1000	DRC2221SS	DRC2221	-	DRC790	-	DRC796	-	-	DRC365	DRC535	DRC545
	400	400	DRC160SS	DRC160	-	DRC800	-	DRC797	DRC120	DRC244	DRC361	DRC557	DRC562
		500	DRC161SS	DRC161	-	DRC800	-	DRC797	DRC120	DRC244	DRC362	DRC558	DRC563
		600	DRC162SS	DRC162	-	DRC800	-	DRC797	DRC120	DRC244	DRC363	DRC559	DRC564
		800	DRC163SS	DRC163	-	DRC800	-	DRC797	DRC120	DRC244	DRC364	DRC560	DRC565
	600	400	DRC61SS	DRC61	DRC61P	DRC810/3	DRC810/3P	DRC823	DRC113	DRC229	DRC361	DRC601	DRC621
		500	DRC62SS	DRC62	DRC62P	DRC810/3	DRC810/3P	DRC823	DRC113	DRC229	DRC362	DRC602	DRC622
		600	DRC63SS	DRC63	DRC63P	DRC810/3	DRC810/3P	DRC823	DRC113	DRC229	DRC363	DRC603	DRC623
		800	DRC64SS	DRC64	DRC64P	DRC810/3	DRC810/3P	DRC823	DRC113	DRC229	DRC364	DRC604	DRC624
		1000	DRC65SS	DRC65	DRC65P	DRC810/3	DRC810/3P	DRC823	DRC113	DRC229	DRC365	DRC605	DRC625
	800	400	DRC66SS	DRC66	DRC66P	DRC810/4	DRC810/4P	DRC824	DRC114	DRC230	DRC361	DRC606	DRC626
		500	DRC67SS	DRC67	DRC67P	DRC810/4	DRC810/4P	DRC824	DRC114	DRC230	DRC362	DRC607	DRC627
		600	DRC68SS	DRC68	DRC68P	DRC810/4	DRC810/4P	DRC824	DRC114	DRC230	DRC363	DRC608	DRC628
		800	DRC69SS	DRC69	DRC69P	DRC810/4	DRC810/4P	DRC824	DRC114	DRC230	DRC364	DRC609	DRC629
	1000	400	DRC70SS	DRC70	DRC70P	DRC810/4	DRC810/4P	DRC824	DRC114	DRC230	DRC365	DRC610	DRC630
		500	DRC71SS	DRC71	DRC71P	DRC810/5	DRC810/5P	DRC825	DRC115	DRC231	DRC361	DRC611	DRC631
		600	DRC72SS	DRC72	DRC72P	DRC810/5	DRC810/5P	DRC825	DRC115	DRC231	DRC362	DRC612	DRC632
		800	DRC73SS	DRC73	DRC73P	DRC810/5	DRC810/5P	DRC825	DRC115	DRC231	DRC363	DRC613	DRC633
		1000	DRC74SS	DRC74	DRC74P	DRC810/5	DRC810/5P	DRC825	DRC115	DRC231	DRC364	DRC614	DRC634
	1200	400	DRC75SS	DRC75	DRC75P	DRC810/5	DRC810/5P	DRC825	DRC115	DRC231	DRC365	DRC615	DRC635
		500	DRC76SS	DRC76	DRC76P	DRC810/6	DRC810/6P	DRC826	DRC116	DRC232	DRC361	DRC616	DRC636
		600	DRC77SS	DRC77	DRC77P	DRC810/6	DRC810/6P	DRC826	DRC116	DRC232	DRC362	DRC617	DRC637
		800	DRC78SS	DRC78	DRC78P	DRC810/6	DRC810/6P	DRC826	DRC116	DRC232	DRC363	DRC618	DRC638
	1400	600	DRC79SS	DRC79	DRC79P	DRC810/6	DRC810/6P	DRC826	DRC116	DRC232	DRC364	DRC619	DRC639
		800	DRC80SS	DRC80	DRC80P	DRC810/6	DRC810/6P	DRC826	DRC116	DRC232	DRC365	DRC620	DRC640
		1000	DRC81SS	DRC81	DRC81P	DRC810/6	DRC810/6P	DRC826	DRC116	DRC232	DRC366	DRC621	DRC641
	1600	500	DRC82SS	DRC82	DRC82P	DRC810/7	DRC810/7P	DRC827	DRC117	DRC233	DRC362	DRC642	DRC652
		600	DRC83SS	DRC83	DRC83P	DRC810/7	DRC810/7P	DRC827	DRC117	DRC233	DRC363	DRC643	DRC653
		800	DRC84SS	DRC84	DRC84P	DRC810/7	DRC810/7P	DRC827	DRC117	DRC233	DRC364	DRC644	DRC654
	1600	500	DRC87SS	DRC87	DRC87P	DRC810/8	DRC810/8P	DRC828	DRC118	DRC234	DRC362	DRC647	DRC657
		600	DRC88SS	DRC88	DRC88P	DRC810/8	DRC810/8P	DRC828	DRC118	DRC234	DRC363	DRC648	DRC658
			800	DRC89SS	DRC89	DRC89P	DRC810/8	DRC810/8P	DRC828	DRC118	DRC234	DRC649	DRC659

NOTE: Add the suffix **.35** to the order code for texture RAL 7035 paint.



ZANARDO

New earthquake-proof set

Enhance reliability in your installation.

Improve your skill and working quality.

see more on pag. 32

CABINETS

DRC EARTHQUAKE ANTI-SEISMIC KIT

This kit will be order together with a DRC cabinets. Mounting will be done in our factory.

Depending on the geographical area in which they take place, earthquakes are a serious threat to the population and to property.

Fuse boxes and data centres are important not only for their high financial value but even more so for the key role they play in infrastructure systems. Hence the requirement to ensure they are protected from earthquakes in regions at risk of seismic activity.

Enclosures and cabinets, generally those that incorporate control panels and servers, play a central role in ensuring the full operation of infrastructure systems: if these suffer serious structural damage, the operation of the whole system is put at risk.

The seismic safety of enclosures and cabinets is therefore of vital importance.

Different standards define the conditions which must be satisfied by such enclosures and cabinets for them to be considered earthquake-proof. Therefore, depending on the **geographical area** and the **application**, different standards must be complied with.

Although these may adopt different approaches, they all have one central point in common: the test on the shake table, which simulates the accelerations experienced by an object during an earthquake.

We propose 3 different kit:

- Light from 0 to 100 kg
- Intermediate from 100 to 200 kg
- Heavy from 200 to 500 kg

They cover Zone 1 seismic areas to the maximum Zone 4 areas. The tests were carried out with different weight loads on the internal panelling, from a minimum weight of 100 kg up to a maximum weight of 500 kg.



SERVICES ON REQUEST

All modifications made on request may affect existing standard certificates and declarations of conformity.

All customisation requests must be specified and detailed in full at the time of ordering, and cannot be changed after the order has been confirmed.

We have passed through the

CESI - LPS Laboratory
SEISMIC QUALIFICATION TEST
IEEE std 693 "High Performance level"

CESI

Technical data subject to change without notice.


Pre-assembly
accessories


Painting


Drilling


Customization

CABINETS

DRC EARTHQUAKE ANTI-SEISMIC KIT



LIGHT KIT
from 0 to 100 kg



INTERMEDIATE KIT
from 100 to 200 kg



HEAVY KIT
from 200 to 500 kg

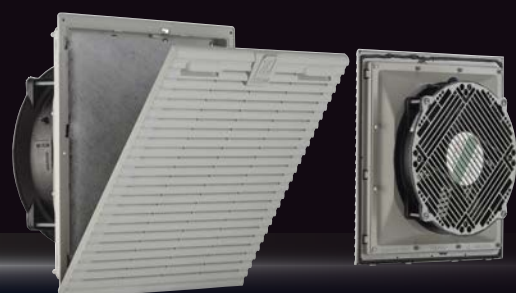


Reduce failure problems Wall mounting fans

Quick installation and easy filters cleaning.

From 200 to 1000 M³/h air flow systems.

see more on pag. 70



CABINETS

VFR

Monobloc structure cabinets with a high degree of flexibility.

- Bottom panel with cable entry flange.
- Side panels and roof are completely welded.
- Back panel fixed with screws.
- Available with solid or transparent door, with or without internal door.
- Adjustable 2,5 mm FeZn internal plate.
- Plinth application configuration.

 **NOTE:** Enclosures for indoor use only, please get in contact with our technical department for outdoor use.



Degree of Protection and Approvals:
 IP66 CEI EN 62 208 / CEI EN 60529 internal use
 IK10 CEI EN 62 208 / CEI EN 62262

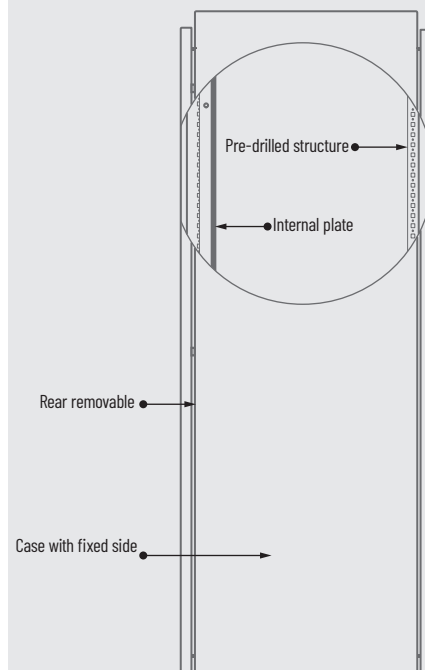


* Does not apply for transparent door.

Painting:
 Thermosetting powders

Standard colours:
 RAL 7035 textured
 Plinth: RAL 7009 textured

Material:
 1,5/1,8 mm thick carbon steel sheet



SERVICES ON REQUEST

All modifications made on request may affect existing standard certificates and declarations of conformity.

All customisation requests must be specified and detailed in full at the time of ordering, and cannot be changed after the order has been confirmed.

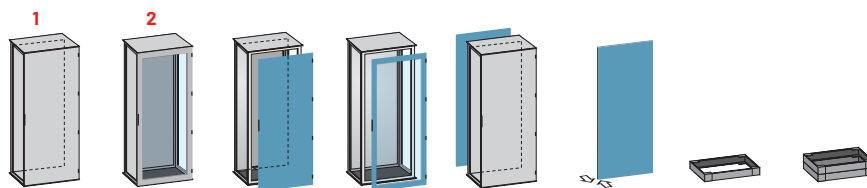
Technical data subject to change without notice.



CABINETS

VFR

1-2 By separated ordering:
plinth (internal plate is
included).



Dimension (mm)			VFR solid door, internal plate and back panel	VFRP glass door, internal plate and back panel	Door solid	Door glass	Back panel	Plate Front-installation internal plate	Plinth H 100	Plinth H 200
H	W	D								
600	1400	400	VFR1464	-	QO3614	-	VFR811	QO146	DRC641	DRC651
	1600		VFR1664	-	QO3616	-	VFR813	QO166	DRC646	DRC656
	1800		VFR1864	-	QO3618	-	VFR811	QO186	DRC666	DRC668
	2000		VFR2064	-	QO3620	-	VFR815	QO206	DRC667	DRC669
800	1400	400	VFR1484	-	QO3814	-	VFR812	QO148	DRC641	DRC651
	1600		VFR1684	-	QO3816	-	VFR814	QO168	DRC646	DRC656
	1800		VFR1884	-	QO3818	-	VFR812	QO188	DRC666	DRC668
	2000		VFR2084	-	QO3820	-	VFR816	QO208	DRC667	DRC669
1000	1600	400	VFR16104	-	QO31016	-	VFR815	QO161	DRC646	DRC656
	1800		VFR18104	-	QO31018	-	VFR813	QO181	DRC666	DRC668
	2000		VFR20104	-	QO31020	-	VFR817	QO201	DRC667	DRC669
1400	600	400	VFR21	VFR21P	VFR801	VFR801P	VFR811	VFR101	DRC601	DRC621
	800		VFR22	VFR22P	VFR802	VFR802P	VFR812	VFR102	DRC606	DRC626
1600	600	400	VFR23	VFR23P	VFR803	VFR803P	VFR813	VFR103	DRC601	DRC621
	800		VFR24	VFR24P	VFR804	VFR804P	VFR814	VFR104	DRC606	DRC626
	1000		VFR25	VFR25P	VFR805	VFR805P	VFR815	VFR105	DRC611	DRC631
1800	600	400	VFR26	VFR26P	DRC801	DRC801P	DRC811	DRC101	DRC601	DRC621
	800		VFR28	VFR28P	DRC802	DRC802P	DRC812	DRC102	DRC606	DRC626
	1000		VFR30	VFR30P	DRC803	DRC803P	DRC813	DRC103	DRC611	DRC631
	600	500	VFR27	VFR27P	DRC801	DRC801P	DRC811	DRC101	DRC602	DRC622
	800		VFR29	VFR29P	DRC802	DRC802P	DRC812	DRC102	DRC607	DRC627
	1000		VFR31	VFR31P	DRC803	DRC803P	DRC813	DRC103	DRC612	DRC632
	1200		VFR32	VFR32P	DRC804	DRC804P	DRC814	DRC104	DRC617	DRC637
	1600		VFR33	VFR33P	DRC810	DRC810P	DRC820	DRC110	DRC647	DRC657
2000	600	400	VFR34	VFR34P	DRC805	DRC805P	DRC815	DRC105	DRC601	DRC621
	800		VFR36	VFR36P	DRC806	DRC806P	DRC816	DRC106	DRC606	DRC626
	1000		VFR38	VFR38P	DRC807	DRC807P	DRC817	DRC107	DRC611	DRC631
	1200		VFR42	VFR42P	DRC808	DRC808P	DRC818	DRC108	DRC616	DRC636
	600	500	VFR35	VFR35P	DRC805	DRC805P	DRC815	DRC105	DRC602	DRC622
	800		VFR37	VFR37P	DRC806	DRC806P	DRC816	DRC106	DRC607	DRC627
	1000		VFR39	VFR39P	DRC807	DRC807P	DRC817	DRC107	DRC612	DRC632
	1200		VFR40	VFR40P	DRC808	DRC808P	DRC818	DRC108	DRC617	DRC637
	1600		VFR41	VFR41P	DRC810/2	DRC810/2P	DRC822	DRC112	DRC647	DRC657


NOTE: Add the suffix **.35** to the order code for texture RAL 7035 paint.

CABINETS

KA

Economic modular cabinet system with solid door, suitable for in-line settings.

- Solid drawn-columns structure is welded directly on bottom panel and on roof.
- Lower base with cable entry flange.
- Lateral and back panels are fixed with screws.
- Adjustable 2,5 mm FeZn internal plate.
- Available with solid or glass door, with or without internal plate.
- Plinth application configuration.
- Same accessories as DRC system.

 **NOTE:** Enclosures for indoor use only, please get in contact with our technical department for outdoor use.



Degree of Protection and Approvals:
 IP66 CEI EN 62 208 / CEI EN 60529 internal use
 IK10 CEI EN 62 208 / CEI EN 62262

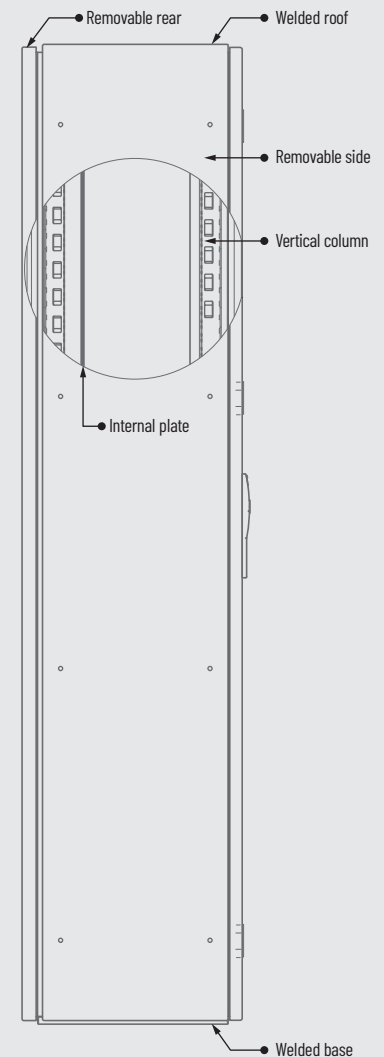


* Does not apply for transparent door.

Painting:
 Thermosetting powders

Standard colours:
 RAL 7035 textured
 Plinth: RAL 7009 textured

Material:
 1,5/1,8 mm thick carbon steel sheet



SERVICES ON REQUEST

All modifications made on request may affect existing standard certificates and declarations of conformity.

All customisation requests must be specified and detailed in full at the time of ordering, and cannot be changed after the order has been confirmed.

Technical data subject to change without notice.

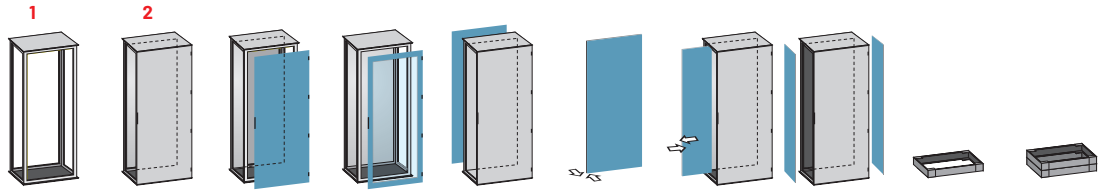


CABINETS

KA

1 By separated ordering:
door, back panel, internal plate,
sides panels and plinths.

2 By separated ordering:
plinth and side panels
(internal plate is included).



Dimension (mm)			KA SS structure	KA solid door, internal plate and back panel	Door solid	Door glass	Back panel	Plate Front-installation internal plate	Plate Side-installation internal plate	Side panels pair	Plinth H 100	Plinth H 200	
H	W	D											
1400	600	400	KA6144SS	KA6144	VFR801	VFR801P	VFR811	VFR101	DRC235	KA1440	DRC601	DRC621	
		500	KA6145SS	KA6145	VFR801	VFR801P	VFR811	VFR101	DRC235	KA1450	DRC602	DRC622	
		600	KA6146SS	KA6146	VFR801	VFR801P	VFR811	VFR101	DRC235	KA1460	DRC603	DRC623	
	800	400	KA8144SS	KA8144	VFR802	VFR802P	VFR812	VFR102	DRC236	KA1440	DRC606	DRC626	
		500	KA8145SS	KA8145	VFR802	VFR802P	VFR812	VFR102	DRC236	KA1450	DRC607	DRC627	
		600	KA8146SS	KA8146	VFR802	VFR802P	VFR812	VFR102	DRC236	KA1460	DRC608	DRC628	
	1200	400	KA12144SS	KA12144	VFR806	VFR806P	VFR816	VFR106	DRC237	KA1440	DRC616	DRC636	
		500	KA12145SS	KA12145	VFR806	VFR806P	VFR816	VFR106	DRC237	KA1450	DRC617	DRC637	
		600	KA12146SS	KA12146	VFR806	VFR806P	VFR816	VFR106	DRC237	KA1460	DRC618	DRC638	
1600	400	400	KA4164SS	KA4164	VFR808	-	VFR818	VFR108	DRC249	KA1640	DRC557	DRC562	
		500	KA4165SS	KA4165	VFR808	-	VFR818	VFR108	DRC249	KA1650	DRC558	DRC563	
		600	KA4166SS	KA4166	VFR808	-	VFR818	VFR108	DRC249	KA1660	DRC559	DRC564	
	600	400	KA6164SS	KA6164	VFR803	VFR803P	VFR813	VFR103	DRC238	KA1640	DRC601	DRC621	
		500	KA6165SS	KA6165	VFR803	VFR803P	VFR813	VFR103	DRC238	KA1650	DRC602	DRC622	
		600	KA6166SS	KA6166	VFR803	VFR803P	VFR813	VFR103	DRC238	KA1660	DRC603	DRC623	
	800	400	KA8164SS	KA8164	VFR804	VFR804P	VFR814	VFR104	DRC239	KA1640	DRC606	DRC626	
		500	KA8165SS	KA8165	VFR804	VFR804P	VFR814	VFR104	DRC239	KA1650	DRC607	DRC627	
		600	KA8166SS	KA8166	VFR804	VFR804P	VFR814	VFR104	DRC239	KA1660	DRC608	DRC628	
	1000	400	KA10164SS	KA10164	VFR805	VFR805P	VFR815	VFR105	DRC240	KA1640	DRC611	DRC631	
		500	KA10165SS	KA10165	VFR805	VFR805P	VFR815	VFR105	DRC240	KA1650	DRC612	DRC632	
		600	KA10166SS	KA10166	VFR805	VFR805P	VFR815	VFR105	DRC240	KA1660	DRC613	DRC633	
	1200	400	KA12164SS	KA12164	VFR807	VFR807P	VFR817	VFR107	DRC241	KA1640	DRC616	DRC636	
		500	KA12165SS	KA12165	VFR807	VFR807P	VFR817	VFR107	DRC241	KA1650	DRC617	DRC637	
		600	KA12166SS	KA12166	VFR807	VFR807P	VFR817	VFR107	DRC241	KA1660	DRC618	DRC638	
	1800	400	400	KA4184SS	KA4184	VFR798	-	VFR793	VFR100	DRC243	KA1840	DRC557	DRC562
			500	KA4185SS	KA4185	VFR798	-	VFR793	VFR100	DRC243	KA1850	DRC558	DRC563
			600	KA4186SS	KA4186	VFR798	-	VFR793	VFR100	DRC243	KA1860	DRC559	DRC564
800			KA4188SS	KA4188	VFR798	-	VFR793	VFR100	DRC243	KA1880	DRC560	DRC565	
600		400	KA6184SS	KA6184	DRC801	DRC801P	DRC811	DRC101	DRC217	KA1840	DRC601	DRC621	
		500	KA6185SS	KA6185	DRC801	DRC801P	DRC811	DRC101	DRC217	KA1850	DRC602	DRC622	
		600	KA6186SS	KA6186	DRC801	DRC801P	DRC811	DRC101	DRC217	KA1860	DRC603	DRC623	
		800	KA6188SS	KA6188	DRC801	DRC801P	DRC811	DRC101	DRC217	KA1880	DRC604	DRC624	
800		400	KA8184SS	KA8184	DRC802	DRC802P	DRC812	DRC102	DRC218	KA1840	DRC606	DRC626	
		500	KA8185SS	KA8185	DRC802	DRC802P	DRC812	DRC102	DRC218	KA1850	DRC607	DRC627	
		600	KA8186SS	KA8186	DRC802	DRC802P	DRC812	DRC102	DRC218	KA1860	DRC608	DRC628	
		800	KA8188SS	KA8188	DRC802	DRC802P	DRC812	DRC102	DRC218	KA1880	DRC609	DRC629	
1000		400	KA10184SS	KA10184	DRC803	DRC803P	DRC813	DRC103	DRC219	KA1840	DRC611	DRC631	
		500	KA10185SS	KA10185	DRC803	DRC803P	DRC813	DRC103	DRC219	KA1850	DRC612	DRC632	
		600	KA10186SS	KA10186	DRC803	DRC803P	DRC813	DRC103	DRC219	KA1860	DRC613	DRC633	
		800	KA10188SS	KA10188	DRC803	DRC803P	DRC813	DRC103	DRC219	KA1880	DRC614	DRC634	
1200		400	KA12184SS	KA12184	DRC804	DRC804P	DRC814	DRC104	DRC220	KA1840	DRC616	DRC636	
		500	KA12185SS	KA12185	DRC804	DRC804P	DRC814	DRC104	DRC220	KA1850	DRC617	DRC637	
		600	KA12186SS	KA12186	DRC804	DRC804P	DRC814	DRC104	DRC220	KA1860	DRC618	DRC638	
		800	KA12188SS	KA12188	DRC804	DRC804P	DRC814	DRC104	DRC220	KA1880	DRC619	DRC639	
1400		400	KA14184SS	KA14184	DRC809	DRC809P	DRC819	DRC109	DRC221	KA1840	DRC641	DRC651	
		500	KA14185SS	KA14185	DRC809	DRC809P	DRC819	DRC109	DRC221	KA1850	DRC642	DRC652	
		600	KA14186SS	KA14186	DRC809	DRC809P	DRC819	DRC109	DRC221	KA1860	DRC643	DRC653	
		800	KA14188SS	KA14188	DRC809	DRC809P	DRC819	DRC109	DRC221	KA1880	DRC644	DRC654	
1600		400	KA16184SS	KA16184	DRC810	DRC810P	DRC820	DRC110	DRC222	KA1840	DRC646	DRC656	
		500	KA16185SS	KA16185	DRC810	DRC810P	DRC820	DRC110	DRC222	KA1850	DRC647	DRC657	
		600	KA16186SS	KA16186	DRC810	DRC810P	DRC820	DRC110	DRC222	KA1860	DRC648	DRC658	

Continues overleaf.

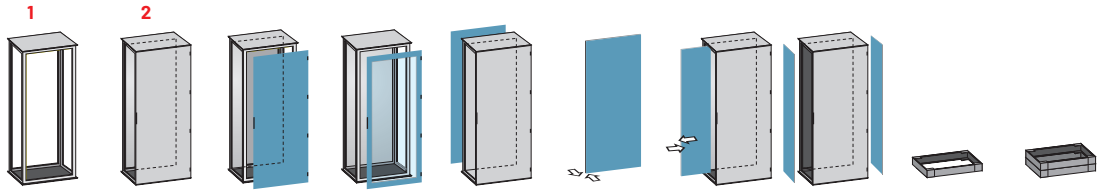
NOTE: Add the suffix **.35** to the order code for texture RAL 7035 paint.

CABINETS

KA

1 By separated ordering:
door, back panel, internal plate,
sides panels and plinths.

2 By separated ordering:
plinth and side panels
(internal plate is included).



Dimension (mm)			KA SS structure	KA solid door, internal plate and back panel	Door solid	Door glass	Back panel	Plate Front-installation internal plate	Plate Side-installation internal plate	Side panels pair	Plinth H 100	Plinth H 200
H	W	D										
2000	400	400	KA4204SS	KA4204	DRC799	-	DRC795	DRC119	DRC242	KA2040	DRC557	DRC562
		500	KA4205SS	KA4205	DRC799	-	DRC795	DRC119	DRC242	KA2050	DRC558	DRC563
		600	KA4206SS	KA4206	DRC799	-	DRC795	DRC119	DRC242	KA2060	DRC559	DRC564
		800	KA4208SS	KA4208	DRC799	-	DRC795	DRC119	DRC242	KA2080	DRC560	DRC565
	600	400	KA6204SS	KA6204	DRC805	DRC805P	DRC815	DRC105	DRC223	KA2040	DRC601	DRC621
		500	KA6205SS	KA6205	DRC805	DRC805P	DRC815	DRC105	DRC223	KA2050	DRC602	DRC622
		600	KA6206SS	KA6206	DRC805	DRC805P	DRC815	DRC105	DRC223	KA2060	DRC603	DRC623
		800	KA6208SS	KA6208	DRC805	DRC805P	DRC815	DRC105	DRC223	KA2080	DRC604	DRC624
	800	400	KA8204SS	KA8204	DRC806	DRC806P	DRC816	DRC106	DRC224	KA2040	DRC606	DRC626
		500	KA8205SS	KA8205	DRC806	DRC806P	DRC816	DRC106	DRC224	KA2050	DRC607	DRC627
		600	KA8206SS	KA8206	DRC806	DRC806P	DRC816	DRC106	DRC224	KA2060	DRC608	DRC628
		800	KA8208SS	KA8208	DRC806	DRC806P	DRC816	DRC106	DRC224	KA2080	DRC609	DRC629
	1000	400	KA10204SS	KA10204	DRC807	DRC807P	DRC817	DRC107	DRC225	KA2040	DRC611	DRC631
		500	KA10205SS	KA10205	DRC807	DRC807P	DRC817	DRC107	DRC225	KA2050	DRC612	DRC632
		600	KA10206SS	KA10206	DRC807	DRC807P	DRC817	DRC107	DRC225	KA2060	DRC613	DRC633
		800	KA10208SS	KA10208	DRC807	DRC807P	DRC817	DRC107	DRC225	KA2080	DRC614	DRC634
	1200	400	KA12204SS	KA12204	DRC808	DRC808P	DRC818	DRC108	DRC226	KA2040	DRC616	DRC636
		500	KA12205SS	KA12205	DRC808	DRC808P	DRC818	DRC108	DRC226	KA2050	DRC617	DRC637
		600	KA12206SS	KA12206	DRC808	DRC808P	DRC818	DRC108	DRC226	KA2060	DRC618	DRC638
		800	KA12208SS	KA12208	DRC808	DRC808P	DRC818	DRC108	DRC226	KA2080	DRC619	DRC639
	1400	400	KA14204SS	KA14204	DRC809/2	DRC809/2P	DRC821	DRC111	DRC227	KA2040	DRC641	DRC651
		500	KA14205SS	KA14205	DRC809/2	DRC809/2P	DRC821	DRC111	DRC227	KA2050	DRC642	DRC652
		600	KA14206SS	KA14206	DRC809/2	DRC809/2P	DRC821	DRC111	DRC227	KA2060	DRC643	DRC653
	1600	400	KA16204SS	KA16204	DRC810/2	DRC810/2P	DRC822	DRC112	DRC228	KA2040	DRC646	DRC656
500		KA16205SS	KA16205	DRC810/2	DRC810/2P	DRC822	DRC112	DRC228	KA2050	DRC647	DRC657	
600		KA16206SS	KA16206	DRC810/2	DRC810/2P	DRC822	DRC112	DRC228	KA2060	DRC648	DRC658	

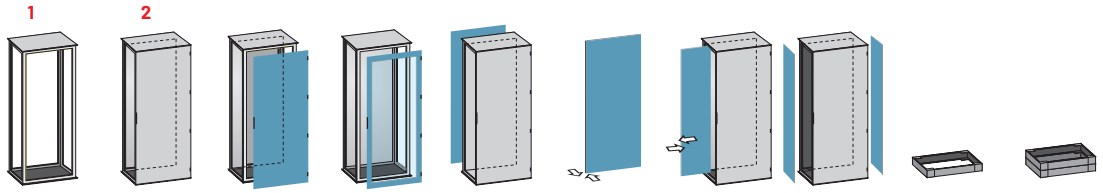
NOTE: Add the suffix **.35** to the order code for texture RAL 7035 paint.

CABINETS

KA

1 By separated ordering:
door, back panel, internal plate,
sides panels and plinths.

2 By separated ordering:
plinth and side panels
(internal plate is included).



Dimension (mm)			KA SS structure	KA solid door, internal plate and back panel	Door solid	Door glass	Back panel	Plate Front-installation internal plate	Plate Side-installation internal plate	Side panels pair	Plinth H 100	Plinth H 200
H	W	D										
2200	400	400	KA4224SS	KA4224	DRC800	-	DRC797	DRC120	DRC244	KA2240	DRC557	DRC562
		500	KA4225SS	KA4225	DRC800	-	DRC797	DRC120	DRC244	KA2250	DRC558	DRC563
		600	KA4226SS	KA4226	DRC800	-	DRC797	DRC120	DRC244	KA2260	DRC559	DRC564
		800	KA4228SS	KA4228	DRC800	-	DRC797	DRC120	DRC244	KA2280	DRC560	DRC565
	600	400	KA6224SS	KA6224	DRC810/3	DRC810/3P	DRC823	DRC113	DRC229	KA2240	DRC601	DRC621
		500	KA6225SS	KA6225	DRC810/3	DRC810/3P	DRC823	DRC113	DRC229	KA2250	DRC602	DRC622
		600	KA6226SS	KA6226	DRC810/3	DRC810/3P	DRC823	DRC113	DRC229	KA2260	DRC603	DRC623
		800	KA6228SS	KA6228	DRC810/3	DRC810/3P	DRC823	DRC113	DRC229	KA2280	DRC604	DRC624
	800	400	KA8224SS	KA8224	DRC810/4	DRC810/4P	DRC824	DRC114	DRC230	KA2240	DRC606	DRC626
		500	KA8225SS	KA8225	DRC810/4	DRC810/4P	DRC824	DRC114	DRC230	KA2250	DRC607	DRC627
		600	KA8226SS	KA8226	DRC810/4	DRC810/4P	DRC824	DRC114	DRC230	KA2260	DRC608	DRC628
		800	KA8228SS	KA8228	DRC810/4	DRC810/4P	DRC824	DRC114	DRC230	KA2280	DRC609	DRC629
	1000	400	KA10224SS	KA10224	DRC810/5	DRC810/5P	DRC825	DRC115	DRC231	KA2240	DRC611	DRC631
		500	KA10225SS	KA10225	DRC810/5	DRC810/5P	DRC825	DRC115	DRC231	KA2250	DRC612	DRC632
		600	KA10226SS	KA10226	DRC810/5	DRC810/5P	DRC825	DRC115	DRC231	KA2260	DRC613	DRC633
		800	KA10228SS	KA10228	DRC810/5	DRC810/5P	DRC825	DRC115	DRC231	KA2280	DRC614	DRC634
	1200	400	KA12224SS	KA12224	DRC810/6	DRC810/6P	DRC826	DRC116	DRC232	KA2240	DRC616	DRC636
		500	KA12225SS	KA12225	DRC810/6	DRC810/6P	DRC826	DRC116	DRC232	KA2250	DRC617	DRC637
		600	KA12226SS	KA12226	DRC810/6	DRC810/6P	DRC826	DRC116	DRC232	KA2260	DRC618	DRC638
		800	KA12228SS	KA12228	DRC810/6	DRC810/6P	DRC826	DRC116	DRC232	KA2280	DRC619	DRC639
	1400	500	KA14225SS	KA14225	DRC810/7	DRC810/7P	DRC827	DRC117	DRC233	KA2250	DRC642	DRC652
		600	KA14226SS	KA14226	DRC810/7	DRC810/7P	DRC827	DRC117	DRC233	KA2260	DRC643	DRC653
	1600	500	KA16225SS	KA16225	DRC810/8	DRC810/8P	DRC828	DRC118	DRC234	KA2250	DRC647	DRC657
		600	KA16226SS	KA16226	DRC810/8	DRC810/8P	DRC828	DRC118	DRC234	KA2260	DRC648	DRC658


NOTE: Add the suffix **.35** to the order code for texture RAL 7035 paint.

CABINETS

KM - KQ

Economic cabinet system

- Solid-door cabinet.
- Monoblock structure.
- Bottom panel with cable entry flange.
- Side panels, roof and back panel are completely welded.
- Non-adjustable 2,5 mm FeZn internal plate.
- Plinth application configuration.

 **NOTE:** Enclosures for indoor use only, please get in contact with our technical department for outdoor use.



Degree of Protection and Approvals:

IP66 CEI EN 62 208 / CEI EN 60529 internal use
IK10 CEI EN 62 208 / CEI EN 62262



Painting:

Thermosetting powders

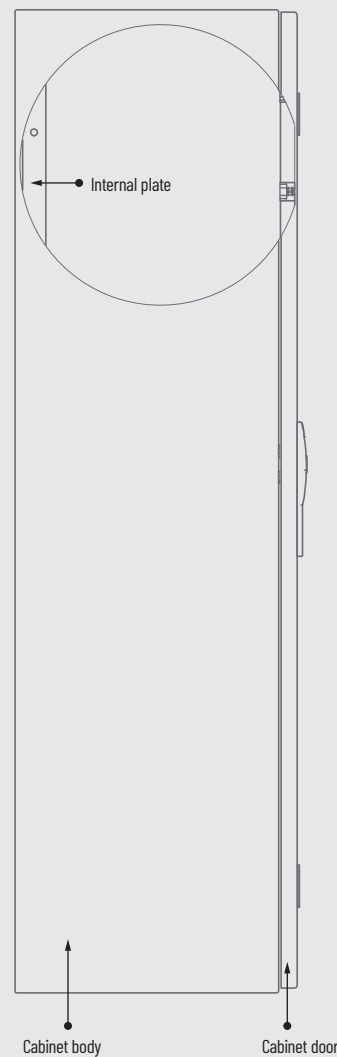
Standard colours:

RAL 7035 textured

Plinth: RAL 7009 textured

Material:

1,5/1,8 mm thick carbon steel sheet



SERVICES ON REQUEST

All modifications made on request may affect existing standard certificates and declarations of conformity.

All customisation requests must be specified and detailed in full at the time of ordering, and cannot be changed after the order has been confirmed.

Technical data subject to change without notice.



Pre-assembly accessories



Painting



Drilling



Customization

SUSPENSION SYSTEMS

HLT SUSPENSION SYSTEM

A complete range of accessories that guarantees the best results for control units in man/automatic machines interaction, thanks to the design and the functionality of components. It is possible to add assisted suspension systems and customised systems depending on components weight.

- To combine with D93-DPH, D93-DCF, D93-DFF control cases, aluminium cases and VESA equipment.

 **NOTE:** Enclosures for indoor use only, please get in contact with our technical department for outdoor use.



Painting:
Thermosetting powders

Standard colours:
Smooth RAL 7016 (joints)
Smooth RAL 7036 (moulded tubing)

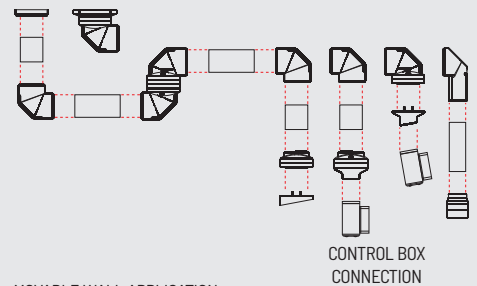
Material:
Alloy

Tube technical data:
Moulded tubing 62x85 mm
Length up to 2000 mm

Max. carrying weight up to:
800N with 1000 m

Configuration selection guide:

CEILING MOUNTING

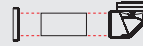


CONTROL BOX CONNECTION

MOVABLE WALL APPLICATION



FIXED WALL APPLICATION



INTERMEDIATE JOINT APPLICATION

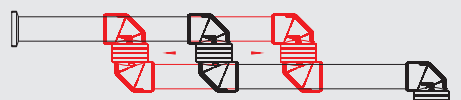
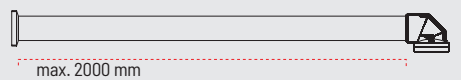


LIGHT-SIGNALLING DEVICE SUPPORT

FLOOR APPLICATION

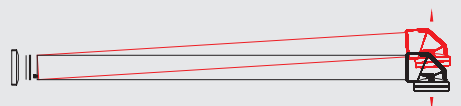


VERTICAL FLOOR APPLICATION



L1= max. 1500 mm L2= max. 1500 mm
L1+L2= overall length max. 2000 mm

In an intermediate joint suspension system, single tubular profile length (L1-L2) is variable (max. 1500 mm), but the maximum overall length is 2000 mm.



Tilt constant adjustment (according to load, up to 4°).

H SEKE

Technical data subject to change without notice.

SERVICES ON REQUEST

All modifications made on request may affect existing standard certificates and declarations of conformity.

All customisation requests must be specified and detailed in full at the time of ordering, and cannot be changed after the order has been confirmed.

 Pre-assembly accessories

 Painting

 Drilling

SUSPENSION SYSTEMS

D93-XXX HANGING CONTROL

D93-DPH



Hanging control box in completely welded steel; hinged back door; anodized aluminium front panel; side profiles in aluminium.
HLT suspension system installation configuration.

NOTE:
Enclosures for indoor use only, please get in contact with our technical department for outdoor use.



Dimension (mm)			Code
H	W	D	
200	360	155	D93/DPH3620/HLT
300	440	210	D93/DPH4430/HLT
380	440		D93/DPH4438/HLT
500	560		D93/DPH5650/HLT
380	660		D93/DPH6638/HLT

Painting:
Thermosetting powders

Standard colours:
RAL 7035 textured
Profile: RAL6033 textured

Material:
Mild steel, 1,5 mm thickness; front cover and profiles: alloy 2 mm

D93-DCF



Hanging control box in completely welded steel; hinged back door; anodized aluminium front panel; aluminium frame.
HLT suspension system installation configuration.

NOTE:
Enclosures for indoor use only, please get in contact with our technical department for outdoor use.



Dimension (mm)			Code
H	W	D	
400	400	200	D93/DCF4420/HLT
500			D93/DCF4520/HLT
600			D93/DCF4620/HLT
500	500	350	D93/DCF5520/HLT
700			D93/DCF5735/HLT
600	600		D93/DCF6635/HLT

Painting:
Thermosetting powders

Standard colours:
RAL 7035 textured
Frame: RAL7016 textured

Material:
Mild steel, 1,5 mm thickness; front cover and profiles: alloy 2 mm

D93-DFE



Hanging control box in completely welded steel; hinged front door; side profiles in aluminium. 2mm thick FeZn internal plate; HLT suspension system installation configuration.

NOTE:
Enclosures for indoor use only, please get in contact with our technical department for outdoor use.



Dimension (mm)			Code
H	W	D	
300	300	180	D93/DFE3318/HLT
300	400	180	D93/DFE4318/HLT
400	300	180	D93/DFE3418/HLT
400	400	180	D93/DFE4418/HLT
500	500	180	D93/DFE5518/HLT

Painting:
Thermosetting powders

Standard colours:
RAL 7035 textured
Profile: RAL6033 textured

Material:
Mild steel, 1,5 mm thickness; front cover and profiles: alloy 2 mm

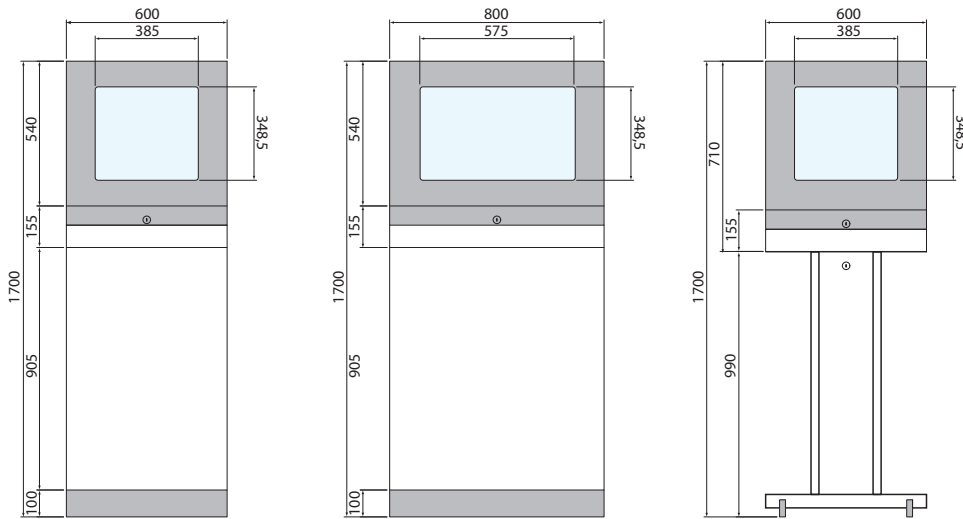
DESK CABINETS

DRC-LAN

PC units housing floor-standing cabinets for industrial environments.

- With IP66 rated protection degree.
- New design sporting glass and plinth, RAL 9005 and RAL 7035.

NOTE: Enclosures for indoor use only, please get in contact with our technical department for outdoor use.



Degree of Protection and Approvals:

IP66 CEI EN 62 208 / CEI EN 60529 internal use
IK10 CEI EN 62 208 / CEI EN 62262



Painting:

Thermosetting powders

Standard colours:

RAL 7035 textured
Doors profile: RAL 9005 smooth
Plinth: RAL 9005 smooth

Material:

1,5/1,8 mm thick carbon steel sheet



SERVICES ON REQUEST

All modifications made on request may affect existing standard certificates and declarations of conformity.

All customisation requests must be specified and detailed in full at the time of ordering, and cannot be changed after the order has been confirmed.

Technical data subject to change without notice.



DESK CABINETS

DRC-LAN

Dimension (mm)			Code	Screen size	Plinth H100 RAL 9005	Plinth H200 RAL 9005	Pedestal with wheels RAL 7035
H	W	D					
1600	600		DRC-LAN-11	20"	7029	7029/2	-
1600	800	600	DRC-LAN-12	27"	7030	7030/2	-
710	600		DRC-LAN-21	20"	-	-	7081



DRC-LAN 11



DRC-LAN 21



DRC-LAN 12



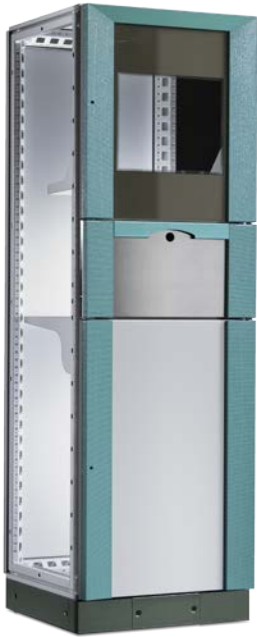
DESK CABINETS

DRC-LAN

Modular cabinets, suitable to housing computer units.

- Equipped with monitor, keyboard, mouse and CPU compartments.
- They can be joined to the other DRC cabinets to build up multiple suites.
- Prepared for plinth mounting.

 NOTE: Enclosures for indoor use only, please get in contact with our technical department for outdoor use.



DRC-LAN



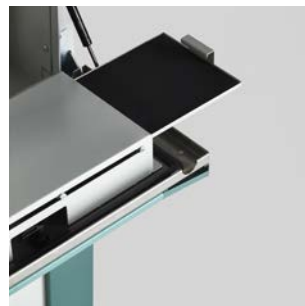
DRC-LAN/A



DRC-LAN/B

Dimension (mm)			Code	Side walls pair	Plinth H100 RAL 6033	Plinth H200 RAL 6033	Stabilizer RAL 6033	Wheels
H	W	D						
1800	600	625	DRC-LAN DRC-LAN A DRC-LAN B	DRC353	DRC603	DRC623	7005	7010

NOTE: Add the suffix .35 to the order code for texture RAL 7035 paint.



SERVICES ON REQUEST

All modifications made on request may affect existing standard certificates and declarations of conformity.

All customisation requests must be specified and detailed in full at the time of ordering, and cannot be changed after the order has been confirmed.

Degree of Protection and Approvals:

IP66 CEI EN 62 208 / CEI EN 60529 internal use
IK10 CEI EN 62 208 / CEI EN 62262



Painting:

Thermosetting powders

Standard colours:

RAL 7035 textured

Plinth: RAL 7009 textured

Profiles: RAL 6033 textured

Material:

1,5 mm thick carbon steel sheet

Technical data subject to change without notice.



DESK CABINETS

LAN1 - LAN2

Single compact cabinets, suitable to housing computer units.

- Equipped with monitor, keyboard, mouse and CPU compartments.
- Prepared for plinth mounting.

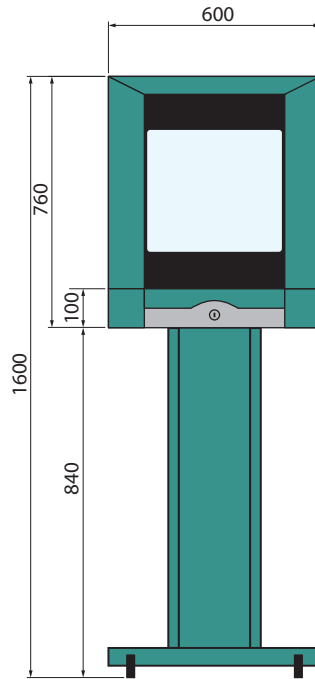
NOTE: Enclosures for indoor use only, please get in contact with our technical department for outdoor use.



DRC-LAN 1



DRC-LAN 1/A



DRC-LAN 2

Dimension (mm)			Code	Plinth H100 RAL 6033	Plinth H200 RAL 6033	Stabilizer RAL 6033	Pedestal RAL 6033	Castor set
H	W	D						
760	600	625	DRC-LAN-2	-	-	-	7080	-
1600			DRC-LAN-1	7007	7007/2	7005	-	7010
			DRC-LAN-1A	7007	7007/2	7005	-	7010



SERVICES ON REQUEST

All modifications on request may affect existing standard certificates and declarations of conformity.

All customisation requests must be specified and detailed in full at the time of ordering, and cannot be changed after the order has been confirmed.

Degree of Protection and Approvals:

IP66 CEI EN 62 208 / CEI EN 60529 internal use
IK10 CEI EN 62 208 / CEI EN 62262



Painting:

Thermosetting powders

Standard colours:

RAL 7035 textured
Plinth: RAL 6033 textured
Profiles: RAL 6033 textured

Material:

1,5 mm thick carbon steel sheet

Technical data subject to change without notice.



DESK CABINETS

LVE CONSOLES

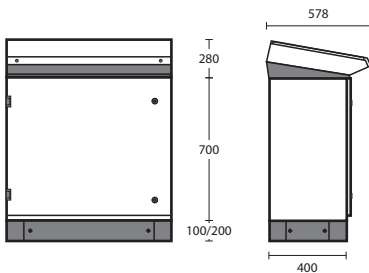
Console system made for easy assembly.

- 14° sloping console.
- Equipped with a system to keep the door open.
- The console can be complete with an upper element, with tubular fittings.
- Equipped with cable inlet plate.
- 2 mm FeZn internal plate.
- The base, prepared for plinth mounting.

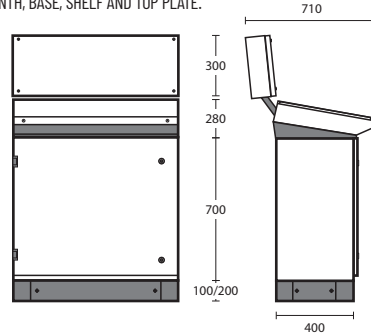
 **NOTE:** Enclosures for indoor use only, please get in contact with our technical department for outdoor use.



LVE desk cabinet with:
PLINTH, BASE AND SHELF.



LVE desk cabinet with:
PLINTH, BASE, SHELF AND TOP PLATE.



Degree of Protection and Approvals:

IP66 CEI EN 62 208 / CEI EN 60529 internal use
IK10 CEI EN 62 208 / CEI EN 62262



Painting:

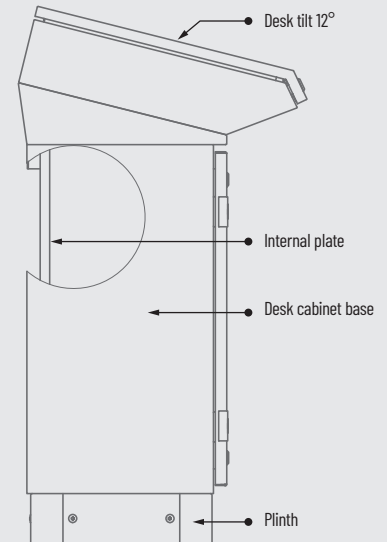
Thermosetting powders

Standard colours:

RAL 7035 textured
Plinth: RAL 7009 textured

Material:

1,5 mm thick carbon steel sheet



SERVICES ON REQUEST

All modifications made on request may affect existing standard certificates and declarations of conformity.

All customisation requests must be specified and detailed in full at the time of ordering, and cannot be changed after the order has been confirmed.

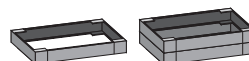
Technical data subject to change without notice.



DESK CABINETS

LVE CONSOLES

— BASE WITH INTERNAL PLATE



Dimension (mm)			Code	Plinth H100 RAL 7009	Plinth H200 RAL 7009
H	W	D			
700	600	400	LVE101	DRC601	DRC621
	800		LVE102	DRC606	DRC626
	1000		LVE103	DRC611	DRC631
	1200		LVE104	DRC616	DRC636
	1400		LVE106	DRC641	DRC651
	1600		LVE105	DRC646	DRC656

NOTE: Add the suffix **.35** to the order code for texture RAL 7035 paint.

— SHELF 12° SLOPING CONSOLE



Dimension (mm)			Code		
H	W	D			
280	600	578	LVE201		
	800		LVE202		
	1000		LVE203		
	1200		LVE204		
	1400		LVE206		
	1600		LVE205		

NOTE: Add the suffix **.35** to the order code for texture RAL 7035 paint.

— TOP PLANE WITH INTERNAL PLATE



Dimension (mm)			Code		
H	W	D			
300	600	120	LVE301		
	800		LVE302		
	1000		LVE303		
	1200		LVE304		
	1400		LVE306		
	1600		LVE305		

NOTE: Add the suffix **.35** to the order code for texture RAL 7035 paint.

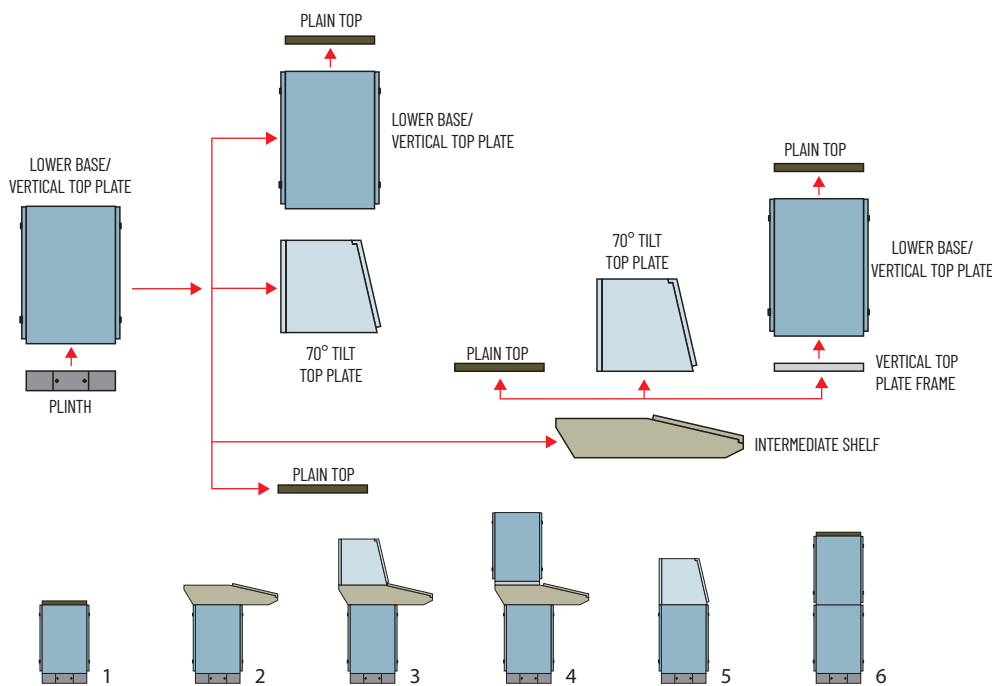
DESK CABINETS

LV CONSOLES

Modular control console.

- Base includes hinged front door.
- Fixed back panel.
- Cable entry flange and adjustable 2mm FeZn internal plate.
- 12° tilt desk and 70° tilt top plate included open position retainer.
- Plinth application configuration

⚠ NOTE: Enclosures for indoor use only, please get in contact with our technical department for outdoor use.



Degree of Protection and Approvals:

IP66 CEI EN 62 208 / CEI EN 60529 internal use
IK10 CEI EN 62 208 / CEI EN 62262



Painting:

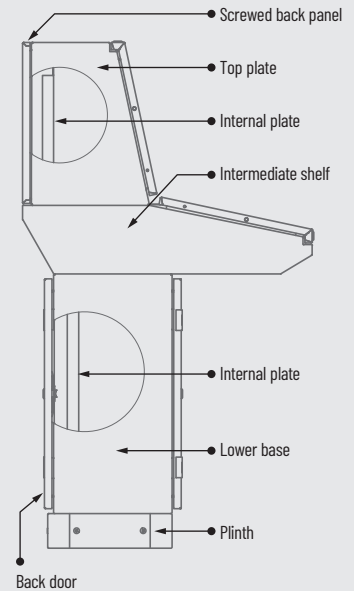
Thermosetting powders

Standard colours:

RAL 7035 textured
Plinth: RAL 7009 textured

Material:

1,5 mm thick carbon steel sheet



SERVICES ON REQUEST

All modifications made on request may affect existing standard certificates and declarations of conformity.

All customisation requests must be specified and detailed in full at the time of ordering, and cannot be changed after the order has been confirmed.

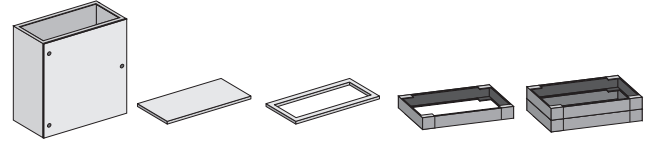
Technical data subject to change without notice.



DESK CABINETS

LV CONSOLES

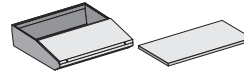
— LOWER BASE VERTICAL TOP PLATE



Dimension (mm)			Code	Plain top	Vertical top plate frame	Plinth H100 RAL 7009	Plinth H200 RAL 7009
H	W	D					
700	600	400	LV101	LV501	LV801	DRC601	DRC621
	800		LV102	LV502	LV802	DRC606	DRC626
	1000		LV103	LV503	LV803	DRC611	DRC631
	1200		LV104	LV504	LV804	DRC616	DRC636
	1600		LV105	LV505	LV805	DRC646	DRC656
	600	500	LV111	LV511	LV811	DRC602	DRC622
	800		LV112	LV512	LV812	DRC607	DRC627
	1000		LV113	LV513	LV813	DRC612	DRC632
	1200		LV114	LV514	LV814	DRC617	DRC637
	1600		LV115	LV515	LV815	DRC641	DRC657

NOTE: Add the suffix **.35** to the order code for texture RAL 7035 paint.

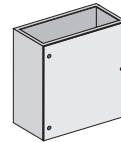
— INTERMEDIATE DESK 12° TILT



Dimension (mm)			Code	Plain top			
H	W	D					
700	600	400	LV201	LV501M			
	800		LV202	LV502M			
	1000		LV203	LV503M			
	1200		LV204	LV504M			
	1600		LV205	LV505M			
	600	500	LV211	LV511M			
	800		LV212	LV512M			
	1000		LV213	LV513M			
	1200		LV214	LV514M			
	1600		LV215	LV515M			

NOTE: Add the suffix **.35** to the order code for texture RAL 7035 paint.

— TOP PLATE 70° TILT



Dimension (mm)			Code				
H	W	D					
470	600	390	LV301				
	800		LV302				
	1000		LV303				
	1200		LV304				
	1600		LV305				
	600	490	LV311				
	800		LV312				
	1000		LV313				
	1200		LV314				
	1600		LV315				


NOTE: Add the suffix **.35** to the order code for texture RAL 7035 paint.

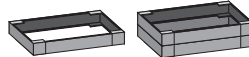
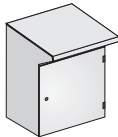
DESK CABINETS

LM CONSOLES

Monobloc control console. Same characteristics and dimensions as LVE model, but cheaper.

- 14° tilt desk.
- Open position retainer.
- Cable entry flange on the bottom.
- 2mm FeZn fixed internal plate.
- Plinth application configuration.

 NOTE: Enclosures for indoor use only, please get in contact with our technical department for outdoor use.



Dimension (mm)			Code	Doors number	Plinth H100 RAL 7009	Plinth H200 RAL 7009
H	W	D				
980	600	400	LM6014	1	DRC601	DRC621
	800		LM8014	1	DRC606	DRC626
	1000		LM1014	1	DRC611	DRC631
	1200		LM1214	2	DRC616	DRC636
	1600		LM1614	2	DRC646	DRC656

NOTE: Add the suffix **.35** to the order code for texture RAL 7035 paint.

SERVICES ON REQUEST

All modifications made on request may affect existing standard certificates and declarations of conformity.

All customisation requests must be specified and detailed in full at the time of ordering, and cannot be changed after the order has been confirmed.

Degree of Protection and Approvals:

IP66 CEI EN 62 208 / CEI EN 60529 internal use
IK10 CEI EN 62 208 / CEI EN 62262



Painting:

Thermosetting powders

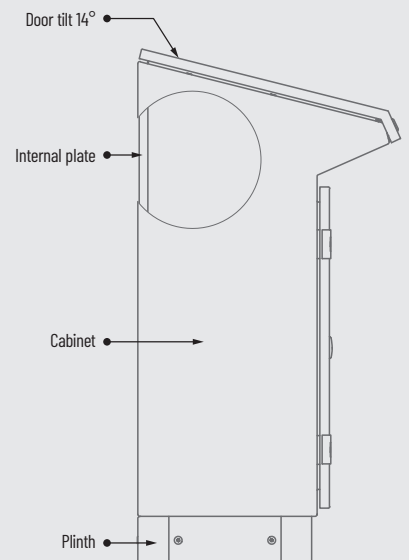
Standard colours:

RAL 7035 textured

Plinth: RAL 7009 textured

Material:

1,5 mm thick carbon steel sheet



Technical data subject to change without notice.




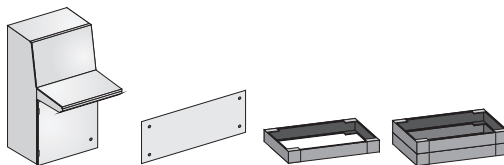
DESK CABINETS

LVM CONSOLES

Monobloc control console.

- 12° tilt desk, 70° tilt top plate, both with open position retainer.
- Cable entry flange on the bottom.
- Single back panel up to W1000mm. Hinged door for W1200-1600 mm.
- 2mm FeZn single internal plate, depth adjustable.
- Plinth application configuration.

 NOTE: Enclosures for indoor use only, please get in contact with our technical department for outdoor use.



Dimension (mm)			Code with internal plate	Screwed plain front cover	Plinth H100 RAL 7009	Plinth H200 RAL 7009
H	W	D				
1370	600	500	LVM6145	LVM61	DRC602	DRC622
	800		LVM8145	LVM81	DRC607	DRC627
	1000		LVM10145	LVM101	DRC612	DRC632
	1200		LVM12145	LVM121	DRC617	DRC637
	1600		LVM16145	LVM161	DRC647	DRC657

NOTE: Add the suffix **.35** to the order code for texture RAL 7035 paint.

Degree of Protection and Approvals:

IP66 CEI EN 62 208 / CEI EN 60529 internal use
IK10 CEI EN 62 208 / CEI EN 62262



Painting:

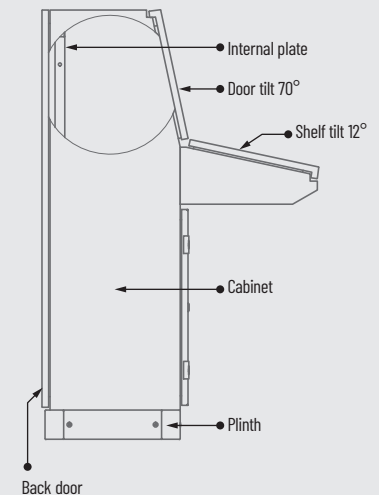
Thermosetting powders

Standard colours:

RAL 7035 textured
Plinth: RAL 7009 textured

Material:

1,5 mm thick carbon steel sheet



SERVICES ON REQUEST

All modifications made on request may affect existing standard certificates and declarations of conformity.

All customisation requests must be specified and detailed in full at the time of ordering, and cannot be changed after the order has been confirmed.

Technical data subject to change without notice.




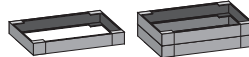
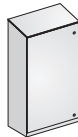
DESK CABINETS

LC CONSOLES

Compact control console, completely welded, no protrusion.

- 18° tilt desk, hinged, openable from inside.
- Suitable for reduced transit space plant.
- Cable entry flange on the bottom.
- 2mm FeZn fixed internal plate.
- Plinth application configuration.

 **NOTE:** Enclosures for indoor use only, please get in contact with our technical department for outdoor use.



Dimension (mm)			Code with internal plate	Doors number	Plinth H100 RAL 7009	Plinth H200 RAL 7009
H	W	D				
1150	600	300	LC6113	1	LC612	LC622
	800		LC8113	1	LC812	LC822
	1000		LC10113	2	LC1012	LC1022
	1200		LC12113	2	LC1212	LC1222
	1600		LC16113	2	LC1612	LC1622

NOTE: Add the suffix **.35** to the order code for texture RAL 7035 paint.

Degree of Protection and Approvals:

IP66 CEI EN 62 208 / CEI EN 60529 internal use
IK10 CEI EN 62 208 / CEI EN 62262



Painting:

Thermosetting powders

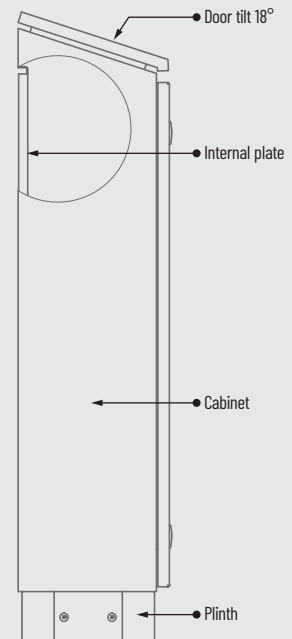
Standard colours:

RAL 7035 textured

Plinth: RAL 7009 textured

Material:

1,5 mm thick carbon steel sheet



SERVICES ON REQUEST

All modifications on request may affect existing standard certificates and declarations of conformity.

All customisation requests must be specified and detailed in full at the time of ordering, and cannot be changed after the order has been confirmed.

Technical data subject to change without notice.



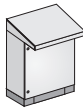
DESK CABINETS

LVD93 CONSOLES

Compact control console.

- With 12° tilt and hinged desk, with open position retainer.
- Bottom base depth: 300 mm.
- Cable entry flange on the bottom.
- 2mm FeZn fixed internal plate.
- H100 plinth is included.

 NOTE: Enclosures for indoor use only, please get in contact with our technical department for outdoor use.



Dimension (mm)			Code	Doors number			
H	W	D					
1060	500	300	LVD93/1	1			
	600		LVD93/2	1			
	800		LVD93/3	1			
	-		-	-	-		
	-		-	-	-	-	

NOTE: Add the suffix **.35** to the order code for texture RAL 7035 paint.

SERVICES ON REQUEST

All modifications on request may affect existing standard certificates and declarations of conformity.

All customisation requests must be specified and detailed in full at the time of ordering, and cannot be changed after the order has been confirmed.

Degree of Protection and Approvals:

IP66 CEI EN 62 208 / CEI EN 60529 internal use
IK10 CEI EN 62 208 / CEI EN 62262



Painting:

Thermosetting powders

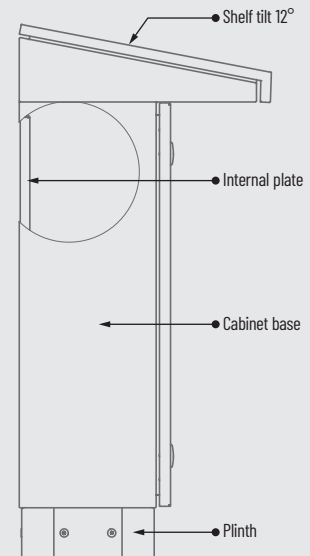
Standard colours:

RAL 7035 textured

Plinth: RAL 7009 textured

Material:

1,5 mm thick carbon steel sheet



Technical data subject to change without notice.



DISTRIBUTION SYSTEM

DRC-RX DRC-KX VFR-KX CABINETS SYSTEM

RX cabinets system are the perfect cabinets for distribution boards.

The DRC basic structure, with drilled internal vertical components and dividing elements, allows every type of configuration for moulded-case circuit breakers location and segregation up to 3A FORM, according to EN 60 439-1.

With the combination of RX system and PROCIRCUIT elements, certified by CESI, it is possible to realize ANS-type boards, with a short-circuit withstand (Icw) up to 90kA / 1", a peak (Ipk) up to 198kA and rated main busbars current up to 4000 A.

Insulators and bar support systems are available.

KX system the perfect cabinets for secondary distribution boards, to locate modular and moulded-case circuit breakers.

This system can be apply to DRC and VFR floor cabinets, both with crystal and solid door or with frame.

Degree of Protection and Approvals:

IP66 CEI EN 62 208 / CEI EN 60529 internal use

IK10 CEI EN 62 208 / CEI EN 62262

up to FORMA 3A EN 61 439-2



Painting:

Thermosetting powders

Standard colours:

RAL 7035 textured

Plinth: RAL 7009 textured

Material:

1,5/1,8 mm thick carbon steel sheet



SERVICES ON REQUEST

All modifications made on request may affect existing standard certificates and declarations of conformity.

All customisation requests must be specified and detailed in full at the time of ordering, and cannot be changed after the order has been confirmed.

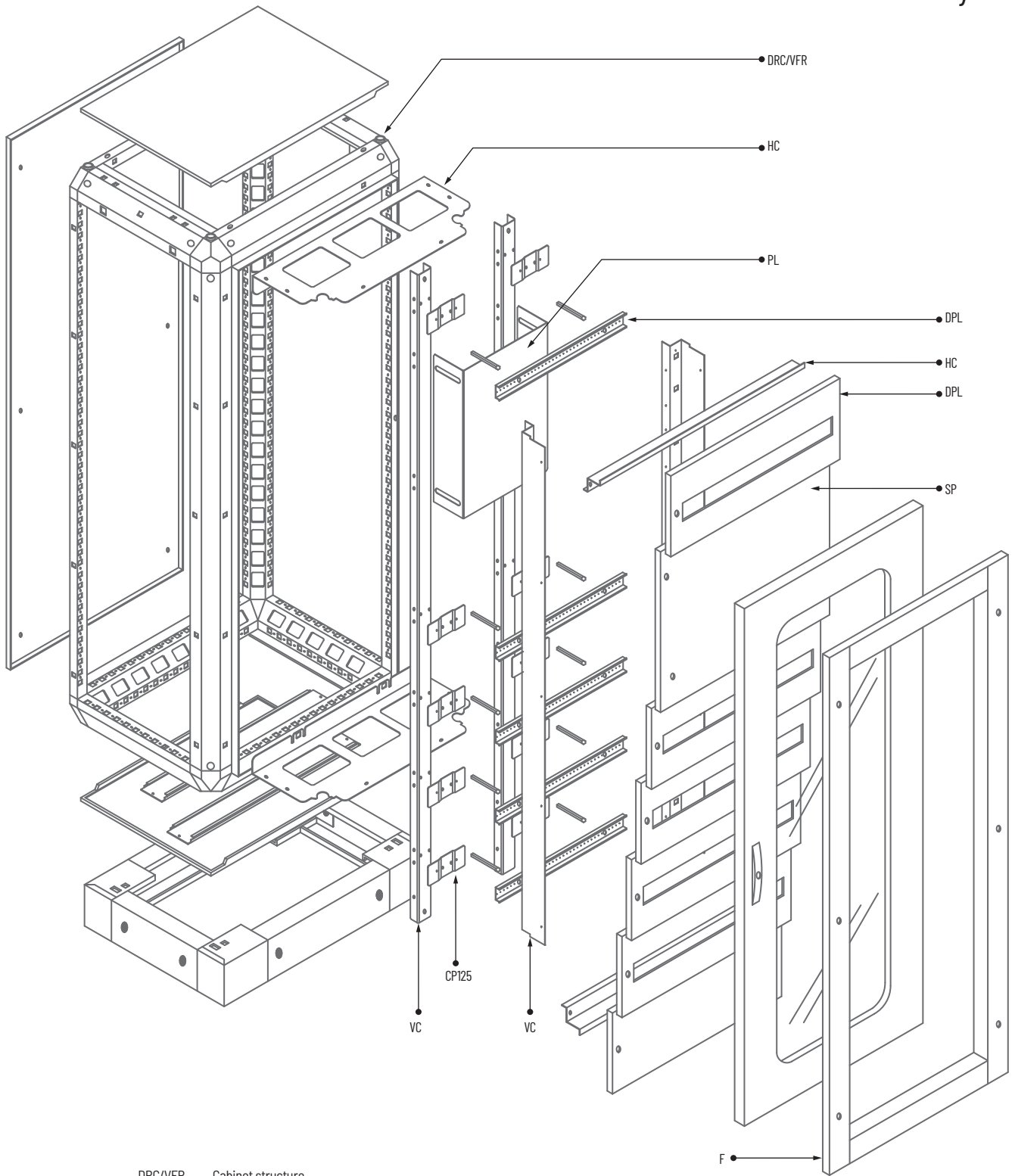
Technical data subject to change without notice.



DISTRIBUTION SYSTEM

DRC-RX DRC-KX VFR-KX CABINETS SYSTEM

KX modular cabinets system



- DRC/VFR Cabinet structure
- PL Plate
- HC Horizontal columns
- DPL Drilled plate
- SP Solid plate
- F Frames
- VC Vertical columns
- CP125 Corner piece for channel

DISTRIBUTION SYSTEM

CMC HANGING BOXES FOR DISTRIBUTION SYSTEM

Hanging boxes suitable for modular circuit breakers distribution boards.

- With transparent door.
- Welded monobloc-structure case.
- Screwed flange both on top and bottom parts.
- Same accessories as KX system.

 **NOTE:** Enclosures for indoor use only, please get in contact with our technical department for outdoor use.



Degree of Protection and Approvals:

IP66 CEI EN 62 208 / CEI EN 60529 internal use
IK10 CEI EN 62 208 / CEI EN 62262



Painting:

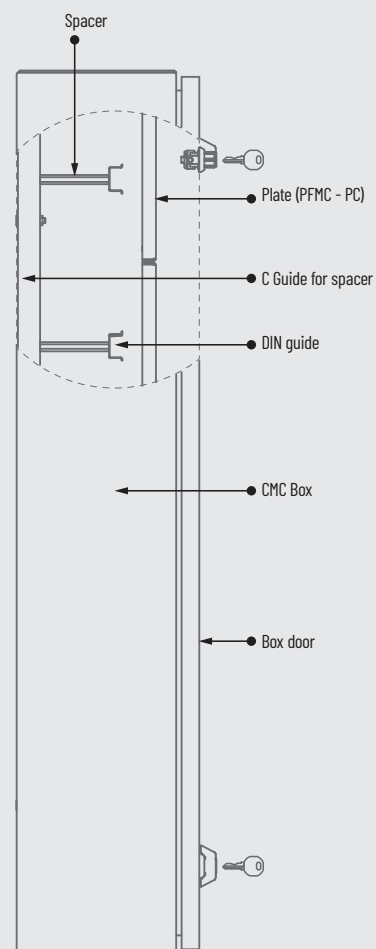
Thermosetting powders

Standard colours:

RAL 7035 textured

Material:

1,5 mm thick carbon steel sheet



SERVICES ON REQUEST

All modifications made on request may affect existing standard certificates and declarations of conformity.

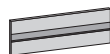
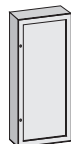
All customisation requests must be specified and detailed in full at the time of ordering, and cannot be changed after the order has been confirmed.

Technical data subject to change without notice.



DISTRIBUTION SYSTEM

CMC HANGING BOXES FOR DISTRIBUTION SYSTEM



Dimension (mm)			Code	Number modular covers	Number modular swithgear	Bracket set AISI 2 mm tick
H	W	D				
460	350	220	CMC12	2X12	24	AG1
660			CMC13	3X12	36	AG1
860			CMC14	4X12	48	AG1
660	550		CMC23	3X24	72	AG1
860			CMC24	4X24	96	AG1
1060			CMC25	5X24	120	AG1
1260	750		CMC26	6X24	144	AG1
1460			CMC27	7X24	168	AG1
860			CMC34	4X36	144	AG1
1060	750		CMC35	5X36	180	AG1
1260		CMC36	6X36	216	AG1	
1460		CMC37	7X36	252	AG1	
1660		CMC38	8X36	288	AG1	

NOTE: Add the suffix **.35** to the order code for texture RAL 7035 paint.

ACCESSORIES

HINGED MODULAR DRILLE PLATES, WITH DIN GUIDE.

Dimension (mm)		Module number	Code	For boxes W=
H	W			
200	300	12	PFM23	350
	500	24	PFM25	550
	700	36	PFM27	750

HINGED MODULAR SOLID PLATES.

Dimension (mm)		Code	For boxes W=
H	W		
200	300	PC23	350
	500	PC25	550
	700	PC27	750
400	300	PC43	350
	500	PC45	550
	700	PC47	750
600	300	PC63	350
	500	PC65	550
	700	PC67	750

DISTRIBUTION SYSTEM

TCF 19" RACK SYSTEM FOR NETWORK

Floor-standing cabinets for networks, telephony and data transmission plant.
 Solid structure with a 180° opening crystal door and RACK 19" pitch drilled columns.
 Side and back panels are removable, with a quick-release locking system.
 Plinths, wheels and levelling feet installation configuration.



Dimension (mm)			Code	Nr° Units (HE) 19" rack	Plinth H100 RAL 6033
H	W	D			
1100	600	600	TCF2266	22	TCF6160
		800	TCF2268	22	TCF6180
	800	600	TCF2286	22	TCF8160
		800	TCF2288	22	TCF8180
1466	600	600	TCF3066	30	TCF6160
		800	TCF3068	30	TCF6180
	800	600	TCF3086	30	TCF8160
		800	TCF3088	30	TCF8180
1733	600	600	TCF3666	36	TCF6160
		800	TCF3668	36	TCF6180
	800	600	TCF3686	36	TCF8160
		800	TCF3688	36	TCF8180
2000	600	600	TCF4266	42	TCF6160
		800	TCF4268	42	TCF6180
	800	600	TCF4286	42	TCF8160
		800	TCF4288	42	TCF8180
2266	600	600	TCF4866	48	TCF6160
		800	TCF4868	48	TCF6180
	800	600	TCF4886	48	TCF8160
		800	TCF4888	48	TCF8180



Painting:

Thermosetting powders

Standard colours:

RAL 9005 matt textured
 Plinth RAL 6033 textured

Material:

1,5 mm thick carbon steel sheet

SERVICES ON REQUEST

All modifications made on request may affect existing standard certificates and declarations of conformity.

All customisation requests must be specified and detailed in full at the time of ordering, and cannot be changed after the order has been confirmed.

Technical data subject to change without notice.

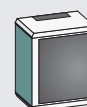


DISTRIBUTION SYSTEM

TCF WALL MOUNTING ENCLOSURES 19"

TCW P400

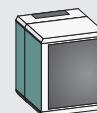
Welded monobloc structure hanging boxes.
Crystal door, RACK 19" drilled internal frame, depth adjustable with 25 mm pitch.
Flanges on top and bottom bases, one with a grommet brush.



Dimension (mm)			Code	Nr° Units (HE) 19" rack
H	W	D		
367	600	400	TCW0664	6
500			TCW0964	9
634			TCW1264	12
767			TCW1564	15
900			TCW1864	18

TCW P525

Welded monobloc structure hanging boxes. The main element, with crystal door and RACK 19" drilled internal frame, depth adjustable with 25 mm pitch, is hinged to the back section, which has flanges on top and bottom bases, one with a grommet brush.



Dimension (mm)			Code	Nr° Units (HE) 19" rack
H	W	D		
367	600	525	TCW0665	6
500			TCW0965	9
634			TCW1265	12
767			TCW1565	15
900			TCW1865	18

SERVICES ON REQUEST

All modifications made on request may affect existing standard certificates and declarations of conformity.

All customisation requests must be specified and detailed in full at the time of ordering, and cannot be changed after the order has been confirmed.

Painting:
Thermosetting powders

Standard colours:
RAL 9005 matt textured

Material:
1,5 mm thick carbon steel sheet

Painting:
Thermosetting powders

Standard colours:
RAL 9005 matt textured

Material:
1,5 mm thick carbon steel sheet

Technical data subject to change without notice.



STAINLESS STEEL

DRC-A DRCP-A MODULAR CABINETS

Modular cabinets system for in-line configurations.

- Completely welded drawcolumns structure;
- Bottom base with cable entry flange, roof, side and back panels fixed with screws.
- Available with solid or transparent door, with or without internal door.
- Adjustable 2,5 mm FeZn internal plate.
- Plinth application configuration.

 **NOTE:** Enclosures for indoor use only, please get in contact with our technical department for outdoor use.



Degree of Protection and Approvals:

IP66 CEI EN 62 208 / CEI EN 60529 internal use
IK10 CEI EN 62 208 / CEI EN 62262



* Does not apply for transparent door.

Finishing:

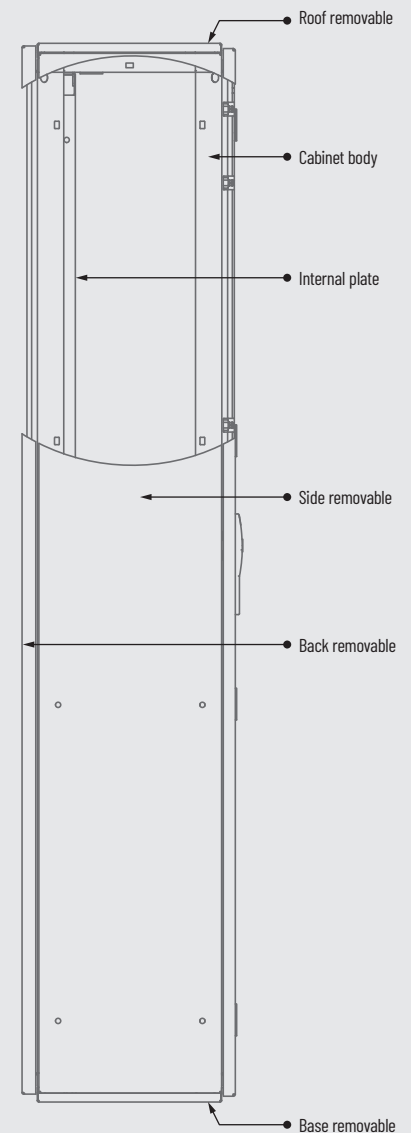
Fine scotch brite

Material:

1,5 mm thick AISI 304/316 stainless-steel

Supply code:

Pls. refer to the table DRC adding extension **A** to the basic code



SERVICES ON REQUEST

All modifications made on request may affect existing standard certificates and declarations of conformity.

All customisation requests must be specified and detailed in full at the time of ordering, and cannot be changed after the order has been confirmed.

Technical data subject to change without notice.

 Pre-assembly accessories

 Drilling

 + AISI 316
Stainless steel
AISI 316

 Customization

STAINLESS STEEL

VFR-A VFRP-A COMPACT CABINETS

Monobloc cabinets; bottom base with cable entry flange, side panels and roof are welded.

- Back panel fixed with screws.
- Available with solid or transparent door, with or without internal door.
- Adjustable 2,5 mm FeZn internal plate.
- Plinth application configuration.

 **NOTE:** Enclosures for indoor use only, please get in contact with our technical department for outdoor use.



Degree of Protection and Approvals:

IP66 CEI EN 62 208 / CEI EN 60529 internal use
 IP10 CEI EN 62 208 / CEI EN 62262



* Does not apply for transparent door.

Finishing:

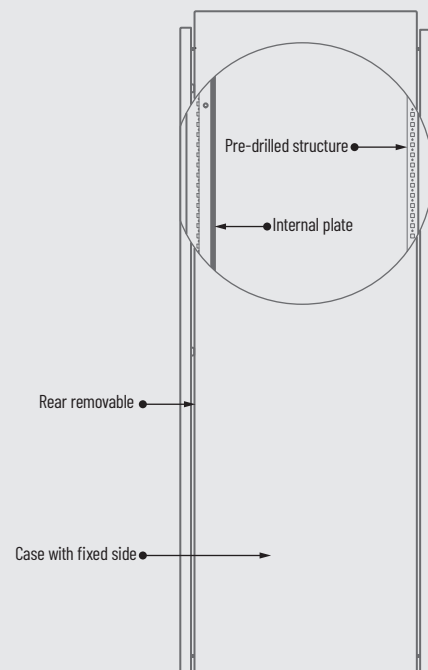
Fine scotch brite

Material:

1,5 mm thick AISI 304/316 stainless-steel

Supply code:

Pls. refer to the table VFR - VFRP adding extension **A** to the basic code



SERVICES ON REQUEST

All modifications made on request may affect existing standard certificates and declarations of conformity.

All customisation requests must be specified and detailed in full at the time of ordering, and cannot be changed after the order has been confirmed.

Technical data subject to change without notice.

 Pre-assembly accessories

 Drilling

 + AISI 316
Stainless steel
AISI 316

 Customization

STAINLESS STEEL

DRC-LAN-I DRC-LAN1-I MODULAR CABINETS

DRC-LAN-I: 1,5 mm stainless- steel sheet drawn-columns bearing frame; drawn-columns are fixed and welded to die-cast aluminum joints. 25 mm pitch drilling scheme; roof and base fixed to structure.

DRC-LAN1-I: 1,5 mm thick stainless-steel monobloc with welded side panels, roof and base; internal profiles with 25 mm pitch drilling scheme.

 **NOTE:** Enclosures for indoor use only, please get in contact with our technical department for outdoor use.



Degree of Protection and Approvals:

IP66 CEI EN 62 208 / CEI EN 60529 internal use
IK10 CEI EN 62 208 / CEI EN 62262



Finishing:

Fine scotch brite

Material:

1,5 mm thick AISI 304/316 stainless-steel

Supply code:

Pls. refer to the table DRC-LAN adding extension I to the basic code

SERVICES ON REQUEST


All modifications made on request may affect existing standard certificates and declarations of conformity.

All customisation requests must be specified and detailed in full at the time of ordering, and cannot be changed after the order has been confirmed.

Technical data subject to change without notice.


Pre-assembly
accessories


Drilling


+ AISI
316
Stainless steel
AISI 316

STAINLESS STEEL

LV-A LVE-A LM-A LVD93-A CONSOLE SYSTEM

Console system with sloping top and lid.

- Inclined lectern and synoptic table, with stop in open position.
- Base with cable entry flange and internal plate in 2 mm FeZn.
- Plinth application configuration.

 **NOTE:** Enclosures for indoor use only, please get in contact with our technical department for outdoor use.

Degree of Protection and Approvals:

IP66 CEI EN 62 208 / CEI EN 60529 internal use
IK10 CEI EN 62 208 / CEI EN 62262



Finishing:

Fine scotch brite

Material:

1,5 mm thick AISI 304/316 stainless-steel

Supply code:

Pls. refer to the table LV LVE LM LVD93 adding extension **A** to the basic code



SERVICES ON REQUEST

All modifications made on request may affect existing standard certificates and declarations of conformity.

All customisation requests must be specified and detailed in full at the time of ordering, and cannot be changed after the order has been confirmed.

Technical data subject to change without notice.


Pre-assembly
accessories


Drilling


+ AISI
316
Stainless steel
AISI 316

STAINLESS STEEL

D93/SAM BOXES

Series wall-mounting distribution switchboards are designed for both indoor and outdoor use (when equipped with their optional rain proof roof).

They are suitable for those special environments that require the use of stainless steel enclosures, such as the food processing industry, chemical industry or environments characterized by aggressive atmospheres.

 **NOTE:** Enclosures for indoor use only, please get in contact with our technical department for outdoor use.



Degree of Protection and Approvals:

IP66 CEI EN 62 208 / CEI EN 60529 internal use
IK10 CEI EN 62 208 / CEI EN 62262



Finishing:

Fine scotch brite

Material:

1,5 mm thick AISI 304 stainless-steel
(AISI 316 optional)

SERVICES ON REQUEST


All modifications made on request may affect existing standard certificates and declarations of conformity.

All customisation requests must be specified and detailed in full at the time of ordering, and cannot be changed after the order has been confirmed.

Technical data subject to change without notice.

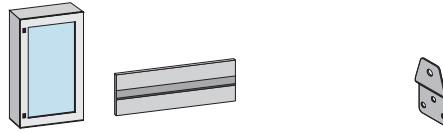

Pre-assembly
accessories


Drilling

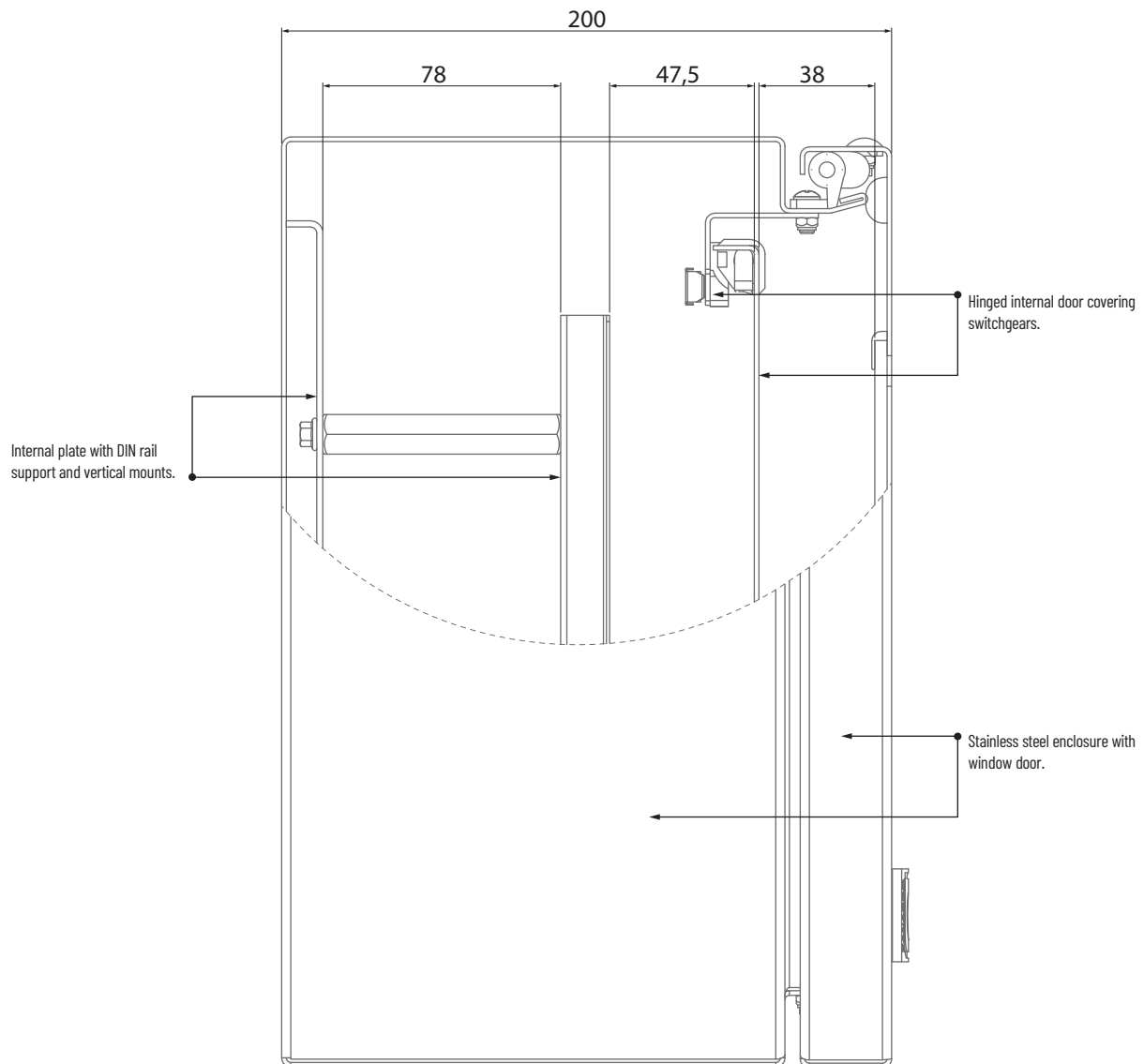

+ AISI
316
Stainless steel
AISI 316

STAINLESS STEEL

D93/SAM BOXES



Dimension (mm)			Code	Number of modular bars	Number of modular unit 18mm units	Bracket set zinc coated mild steel 2mm
H	W	D				
406	306	200	D93/8SAM	1	10	AG1A
506	406		D93/14SAM	2	30	AG1A
606	406		D93/17SAM	2	30	AG1A
706	506		D93/21SAM	3/2	60/40	AG1A
806	606		D93/25SAM	3/2	72/48	AG1A
1006	806		D93/33SAM	4/3/2	144/108/72	AG1A



STAINLESS STEEL

ES-PU-A PUSH-BUTTON AND TERMINAL BOXES

Sealed push-button panels and junction boxes.

- Screwed cover, solid or with Ø 22,5 mm drilling.

- Welded monoblocstructure case can be provided with M4 pins for DIN guide installation, by separated ordering.

 NOTE: Enclosures for indoor use only, please get in contact with our technical department for outdoor use.

 NOTE: Our products are TÜV certified with protection degree IP66 and IK10 and UL-CSA with Types between 1 and 4X complying with UL508A standards for structure without any machining.
To keep these certifications valid, after the required drilling , equipment of Type and certificates equal to or greater than the product itself must be included.



Degree of Protection and Approvals:

IP66 CEI EN 62 208 / CEI EN 60529 internal use
IK10 CEI EN 62 208 / CEI EN 62262



Finishing:

Fine scotch brite

Material:

1,5 mm thick AISI 304/316 stainless-steel

Supply code:

Pls. refer to the table ES-PU adding extension
A to the basic code

SERVICES ON REQUEST

All modifications made on request may affect existing standard certificates and declarations of conformity.

All customisation requests must be specified and detailed in full at the time of ordering, and cannot be changed after the order has been confirmed.

Technical data subject to change without notice.


Pre-assembly
accessories


Drilling


AISI
316
Stainless steel
AISI 316



Customization

STAINLESS STEEL

D93-A D93S-A ES-A BOXES

D93-A D93S-A

Hanging boxes available with solid or transparent door, with or without internal door. Welded monobloc-structure case with 2 mm thick FeZn internal plate.

 **NOTE:** Enclosures for indoor use only, please get in contact with our technical department for outdoor use.



Degree of Protection and Approvals:

IP66 CEI EN 62 208 / CEI EN 60529 internal use
IK10 CEI EN 62 208 / CEI EN 62262



* Does not apply for transparent door.

Finishing:

Fine scotch brite

Material:

1,5 mm thick AISI 304/316 stainless-steel

Supply code:

Pls. refer to the table D93 adding extension **A** to the basic code

ES-A

Sealed junction boxes with fixed solid cover.

The welded monobloc-structure case is provided with fixing supports for DIN guide, or with internal plate by separated ordering.

 **NOTE:** Enclosures for indoor use only, please get in contact with our technical department for outdoor use.



Degree of Protection and Approvals:

IP66 CEI EN 62 208 / CEI EN 60529 internal use
IK10 CEI EN 62 208 / CEI EN 62262



Finishing:

Fine scotch brite

Material:

1,5 mm thick AISI 304/316 stainless-steel

Supply code:

Pls. refer to the table ES adding extension **A** to the basic code

SERVICES ON REQUEST

All modifications made on request may affect existing standard certificates and declarations of conformity.

All customisation requests must be specified and detailed in full at the time of ordering, and cannot be changed after the order has been confirmed.

Technical data subject to change without notice.


Pre-assembly
accessories


Drilling


Stainless steel
AISI 316


Customization

VENTILATION WALL VENTILATION SYSTEM

Fans and filters for air exchange in electrical panels.

Designed and manufactured in Italy, have a rapid mounting system, front grille hinged for maintenance filter cleaning, ball bearing fans with over 40.000 h reliability, polyurethane seals.

Degree of Protection and Approvals:

IP33



Material:

ABS UL94-V0 prot. UVA



RAL 7032: **G**



RAL 7035: **W**



BLACK: **B**

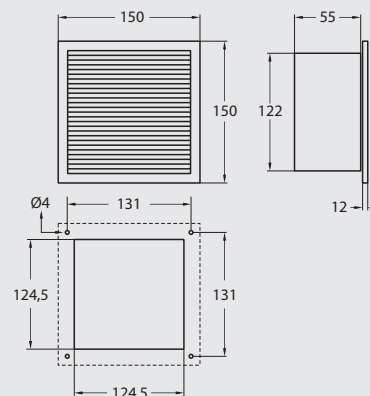


TRANSPARENT: **C**



CHROME: **S**

VENTILATION 200 M³/h



Description	Supply code	Pack	Rated operational voltage	Rated operational current	Power consumption	Noise level	Air flow (free intake)	Air flow with filter set (filter included)	Operating temperature	Weight	Volume
			PCS.	V - ph - Hz	A	W	dB (A)	m ³ /h	m ³ /h	°C	Kg
Fan and filter unit	ARIA-V150-1.2.	1	230, 1~, 50/60	0,14/0,12	22/21	45/50	200	156/150	-10 +70	0,8	0,01
Fan and filter unit	ARIA-V150-2.2.	1	115, 1~, 50/60	0,26/0,24	22/20	45/50	200	156/150	-10 +70	0,8	0,01
Fan and filter unit	ARIA-V150-3.2.	1	24 (DC)	0,40	9,6	48	235	176	-10 +70	0,8	0,01
Fan and filter unit	ARIA-V150-4.2.	1	24 (AC) - 60	0,70	11	47	165	128	-10 +70	0,8	0,01
Outlet filter	ARIA-F150.2.	1	-	-	-	-	-	-	-30 +80	0,2	0,01

- please add **G - W - B - C - S** extension after the point to complete order code.
 - please add **-UL** extension after colour abbreviation to complete order code (ex. **aria-v150-1.2.GUL**).

SERVICES ON REQUEST

All modifications made on request may affect existing standard certificates and declarations of conformity.

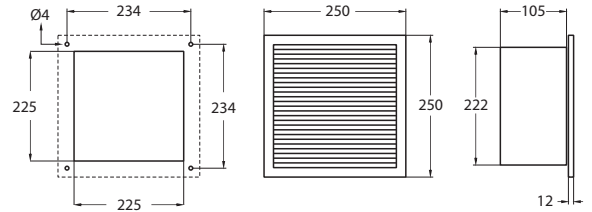
All customisation requests must be specified and detailed in full at the time of ordering, and cannot be changed after the order has been confirmed.

Technical data subject to change without notice.



VENTILATION WALL VENTILATION SYSTEM

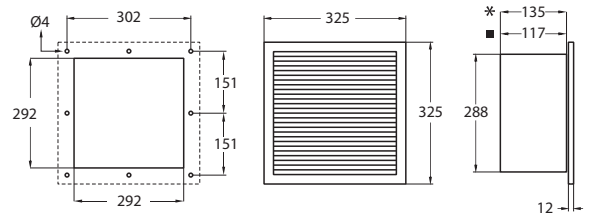
VENTILATION 340/520 M³/h



Description	Supply code	Pack	Rated operational voltage	Rated operational current	Power consumption	Noise level	Air flow (free intake)	Air flow with filter set (filter included)	Operating temperature	Weight	Volume
			PCS.	V - ph - Hz	A	W	dB (A)	m ³ /h	m ³ /h	°C	Kg
Fan and filter unit	ARIA-V250-1.2.	1	230, 1~, 50/60	0,28/0,24	25/26	51/55	340	265/244	-10 +80	1,7	0,01
Fan and filter unit	ARIA-V250-2.2.	1	115, 1~, 50/60	0,65/0,54	22/20	52/55	340	265/244	-10 +80	1,7	0,01
Outlet filter	ARIA-F250.2.	1	-	-	-	-	-	-	-30 +80	0,5	0,01

- please add **G-W-B-C-S** extension after the point to complete order code.
 - please add **-UL** extension after colour abbreviation to complete order code (eg. **aria-v150-1.2.GUL**).

VENTILATION 800/1000 M³/h



Description	Supply code	Pack	Rated operational voltage	Rated operational current	Power consumption	Noise level	Air flow (free intake)	Air flow with filter set (filter included)	Operating temperature	Weight	Volume
			PCS.	V - ph - Hz	A	W	dB (A)	m ³ /h	m ³ /h	°C	Kg
Fan and filter unit	ARIA-V325-1.2.	1	230, 1~, 50/60	0,29/0,33	62/75	59/61	1000	780/790	-15 +55	2,5	0,02
Fan and filter unit	ARIA-V325-2.2.	1	230, 1~, 50/60	0,20/0,22	55/50	65/70	800	624/632	-15 +55	2,5	0,02
Fan and filter unit	ARIA-V325-3.2.	1	115, 1~, 50/60	0,58/0,70	64/80	66/62	1000	780/790	-15 +55	2,5	0,02
Outlet filter	ARIA-F325.2.	1	-	-	-	-	-	-	-15 +55	0,8	0,01

- please add **G-W-B-C-S** extension after the point to complete order code.
 - please add **-UL** extension after colour abbreviation to complete order code (eg. **aria-v150-1.2.GUL**).

1 HE - 486/972 M³/h DRAWER-MOUNTED FANS

An efficient quick-insert fan system which optimize and uniform electric-board and 19" rack data server heat exchange.
 Provided with front warning led and back power connector.

Degree of Protection and Approvals:



Material:
 1,5/2 mm thick anodized aluminium.



Description	Supply code	Pack	Rated operational voltage	Power consumption	Air flow	Operating temperature	Dimension W x D	Height 1HE
			PCS.	V - ph - Hz	W	m ³ /h	°C	mm
3 fans drawer	VE3322	1	230, 1~, 50/60	45	486	-10 +70	430 x 208	43,6
6 fans drawer	VE6622	1	230, 1~, 50/60	90	972	-10 +70	430 x 330	43,6

- 115 Vac and 24 Vdc upon request.

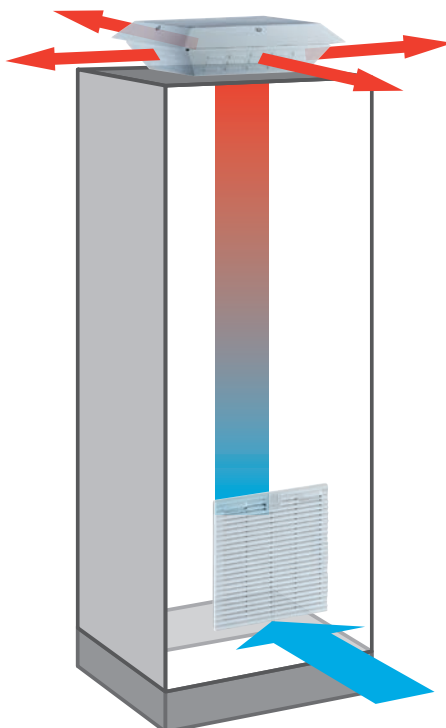
VENTILATION ROOF VENTILATION SYSTEM

Towers with no maintenance needs, for electric boards air exchange/extraction.

Designed and produced in Italy; characterized by steel sheet housings and finned lower base; high-head centrifugal-fans generated flow; more than 40.000h reliability; terminal box connection; polyurethane sealing gaskets.

All the articles are ready to be installed and provided with mounting screws. Available in RAL7032 and RAL7035 textured.

Combine towers to ARIA-F150, ARIA-F250 and ARIA-F325 inlet filters, to create ventilation systems.



Degree of Protection and Approvals:
IP33

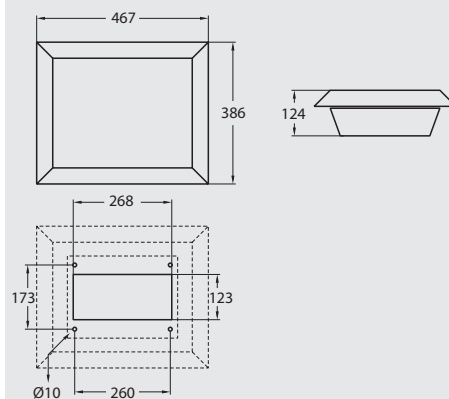
Painting:
Thermosetting powders

Standard colours:
RAL 7035 textured

Material:
Mild steel thickness 1,5 mm
Stainless steel AISI 304/316 th.1,5 mm

Finishing:
Brushed, scotch brite medium

ROOF VENTILATION 600/1000 M³/h



Description	Supply code	Pack	Rated operational voltage	Operating rated current	Power consumption	Noise level	Capacitor	Air flow (free intake)	Operating temperature	Weight	Volume
			PCS.	V - ph - Hz	A	W	dB (A)	µF - V	m ³ /h	°C	Kg
External-protection fan	ZTE600-1.X	1	230, 1~, 50/60	0,30	70	71/72	2-450	600	0 +70	10,4	0,03
External-protection fan	ZTE600-2.X	1	230, 1~, 50/60	0,53/0,75	118/170	72/71	5-450	600	0 +70	10,4	0,03
External-protection fan	ZTE1000-1.X	1	115, 1~, 60/50	0,80	90	71/72	5-370	1000	0 +70	10,6	0,03
External-protection fan	ZTE1000-2.X	1	110, 1~, 50	1,13	120	72/71	20-250	1000	0 +70	10,6	0,03
External-protection fan	ZTE600-1.X-UL	1	230, 1~, 50/60	0,30	70	71/72	2-450	600	0 +70	10,4	0,03
External-protection fan	ZTE600-2.X-UL	1	115, 1~, 60/50	0,80	90	71/72	5-370	600	0 +70	10,4	0,03
External-protection fan	ZTE1000-1.X-UL	1	230, 1~, 50/60	0,75	170	72/71	5-440	1000	0 +70	10,6	0,03
External-protection fan	ZTE1000-2.X-UL	1	115, 1~, 60/50	1,5	170	72/71	20-250	1000	0 +70	10,6	0,03

↳ - Please replace the X with: G for RAL7032; W for RAL7035; A for stainless steel, in the supply code.

SERVICES ON REQUEST

All modifications made on request may affect existing standard certificates and declarations of conformity.

All customisation requests must be specified and detailed in full at the time of ordering, and cannot be changed after the order has been confirmed.

Technical data subject to change without notice.

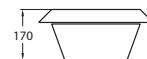
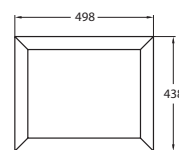
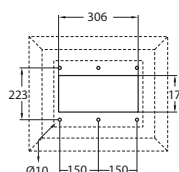


Drilling

VENTILATION

ROOF VENTILATION SYSTEM

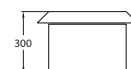
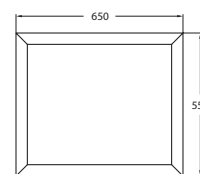
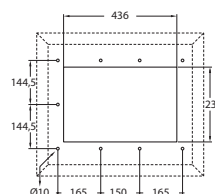
ROOF VENTILATION 1500/2100 M³/h



Description	Supply code	Pack	Rated operational voltage	Rated operational current	Power consumption	Noise level	Capacitor	Air flow (free intake)	Operating temperature	Weight	Volume
			PCS.	V - ph - Hz	A	W	dB (A)	µF - V	m ³ /h	°C	Kg
External-protection fan	ZTE1500-1.X	1	230, 1~, 50	0,73	165	74/75	5-450	1500	0 +70	13,4	0,04
External-protection fan	ZTE1500-2.X	1	115, 1~, 60	1,96	215	75	20-370	1500	0 +70	13,4	0,04
External-protection fan	ZTE1500-2.X-UL	1	115, 1~, 60	1,96	215	75	20-370	1500	0 +70	13,4	0,04
External-protection fan	ZTE2100-1.X	1	230, 1~, 50	1,00	240	78	8-450	2100	0 +70	14	0,04

↳ - Please replace the X with: G for RAL7032; W for RAL7035; A for stainless steel, in the supply code.

ROOF VENTILATION 2800/3100 M³/h

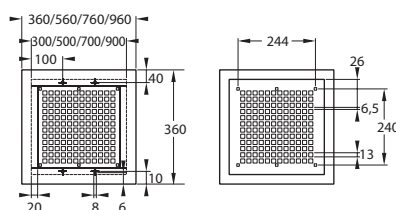
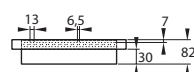
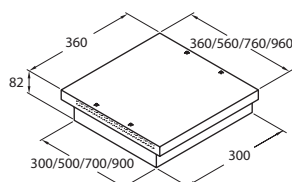


Description	Supply code	Pack	Rated operational voltage	Rated operational current	Power consumption	Noise level	Capacitor	Air flow (free intake)	Operating temperature	Weight	Volume
			PCS.	V - ph - Hz	A	W	dB (A)	µF - V	m ³ /h	°C	Kg
External-protection fan	ZTE3000-1.X	1	230, 1~, 50/60	1,20	300	69	12-400	2800	0 +70	29,3	0,12
External-protection fan	ZTE4000-1.X	1	230, 1~, 50/60	1,20	300	78	12-400	3100	0 +70	31,5	0,12

↳ - Please replace the X with: G for RAL7032; W for RAL7035; A for stainless steel, in the supply code.

VENTILATION CHIMNEYS

To be installed on cabinets roof to create a natural or a forced convective thermal system.



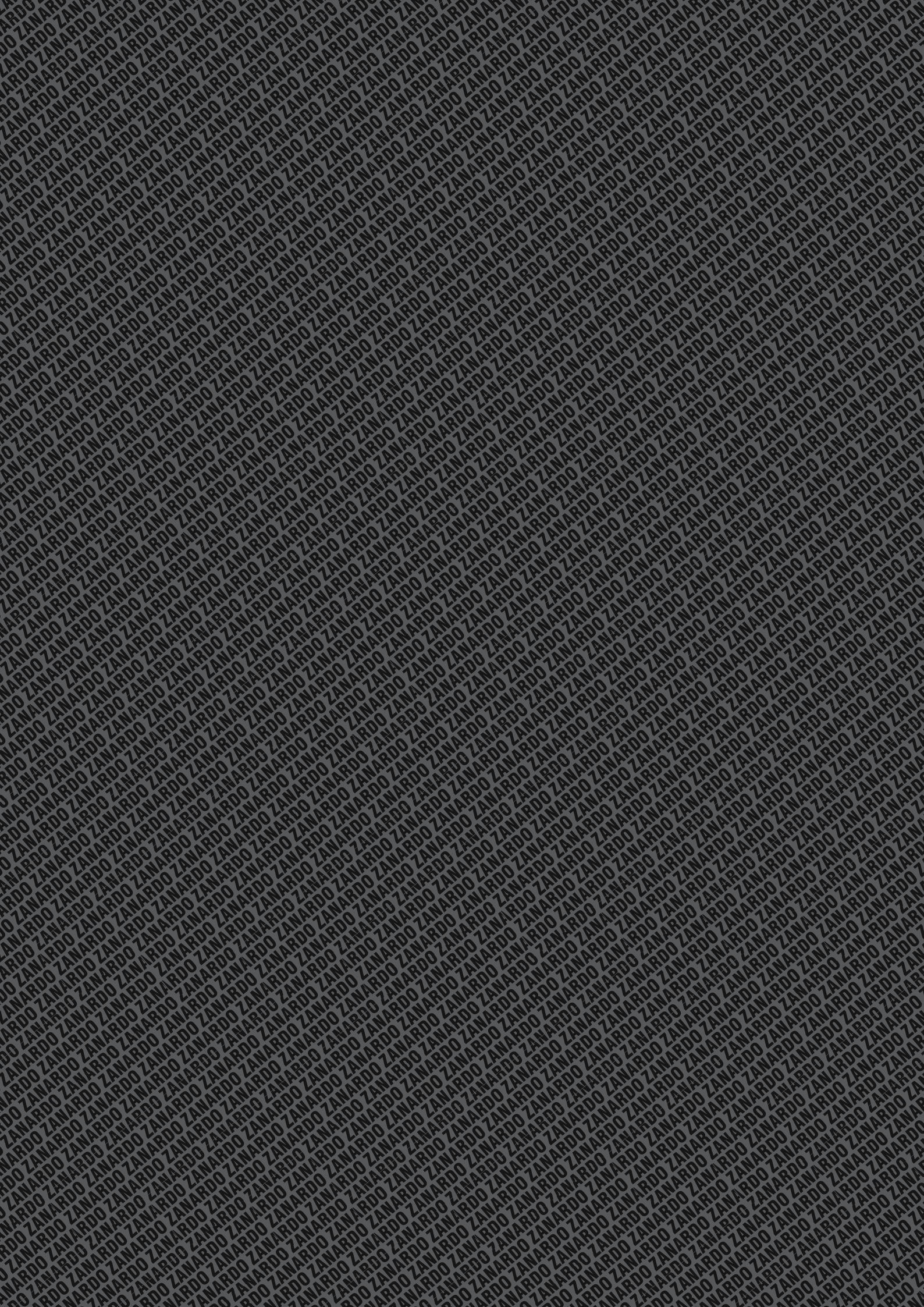
Supply code	Dimension mm
C1	360 x 360 x 80
C2	560 x 360 x 80
C3	760 x 360 x 80
C4	960 x 360 x 80

Degree of Protection and Approvals:
IP20

Painting:
Thermosetting powders

Standard colours:
RAL 7035 textured

Material:
1,5 mm thick steel sheet



KEEP ENERGY ALIVE



ZANARDO

KEEP ENERGY ALIVE

ZANARDO S.p.A.

via Trevisani nel Mondo, 8
31058 SUSEGANA TV - ITALY

Tel +39 0438 450412/3

Fax +39 0438 45 04 26

[http: www.zanardo.com](http://www.zanardo.com)

[mail: info@zanardo.com](mailto:info@zanardo.com)

